



**1011 Coldspring Circle**

**\$980,000**

**2 Elevations Available**

**BEDROOMS: 3**

**BATHS: 2 full, 1 half**

**SQFT: 2,921**

**COMMUNITY: Bronze Leaf at  
Croasdaile Farm**

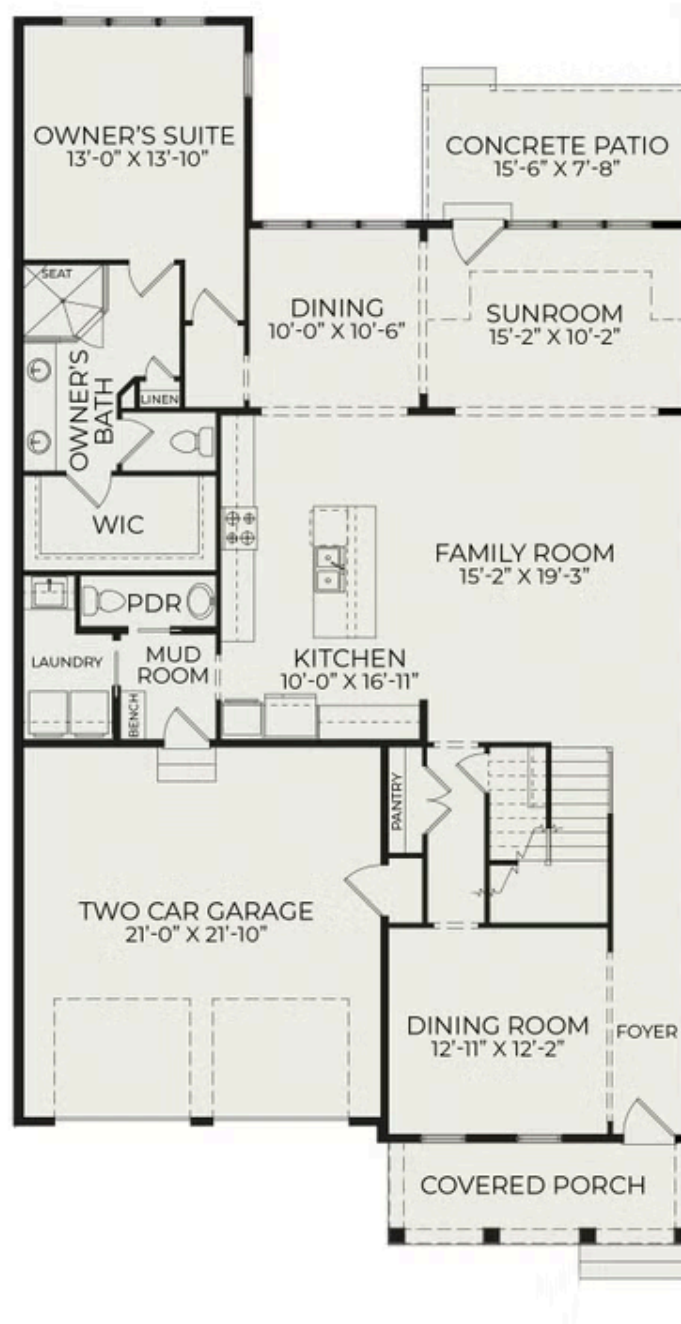
**FLOOR PLAN: Townhome B  
Interior**

**Lock in a 30-Year Fixed Rate at 1% Below Today's Average! With the use of our preferred lender and attorney, you can secure financing at a rate one percent lower than the daily average. No hassle. No gimmicks. Just a straightforward opportunity designed to give you peace of mind, confidence, and long-term security as you take the next step toward your new home.**

Spanning two stories, this townhome embodies contemporary living with an open-concept design that seamlessly connects the family room, kitchen, and dining area. The spacious sunroom off the back of the home invites natural light and offers a delightful extension of the living space. The first floor is dedicated to comfort and luxury, featuring the owner's suite with a spacious walk-in closet, double vanities, and a standing fully tiled shower. Additional highlights on the first floor include a formal dining room, a laundry room, mudroom, and a powder room, ensuring both practicality and style. The second floor unveils a versatile rec room, a powder room for added convenience, two additional bedrooms, and a shared full bathroom. Ample storage is provided with a walk-in attic, and the townhome is complemented by an attached two-car garage.



First Floor (Optional Sun Room)



Second Floor

