



1343 Eldon Circle

\$2,015,000

BEDROOMS: 5

BATHS: 4 full, 1 half

SQFT: 4,105

COMMUNITY: Pinecrest

This home is currently under construction, offering a quicker move-in opportunity without compromising on design. Thoughtfully curated by our design team, it blends elevated finishes with timeless style. Meet with our team to walk the homesite, review design selections, and explore the plans that bring this home to life.

Located in Pinecrest, this community redefines modern urban village living in one of Durham's most historic settings. Found within the Forest Hills Historic District, Pinecrest brings together walkability, thoughtful design, and a strong sense of community. Inspired by the principles of New Urbanism, residents enjoy shared green spaces, scenic walking trails, and pedestrian-friendly streets, all with direct access to the American Tobacco Trail and downtown Durham.

Homes in Pinecrest honor the architectural legacy of the area, featuring Tudor-inspired exteriors paired with refined, modern interiors. Mature trees, natural hardscapes, and curated landscaping create a setting that feels both established and inviting. Here, you can enjoy the privacy of a retreat while remaining just minutes from Durham's dining, arts, and cultural destinations, with Raleigh-Durham International Airport

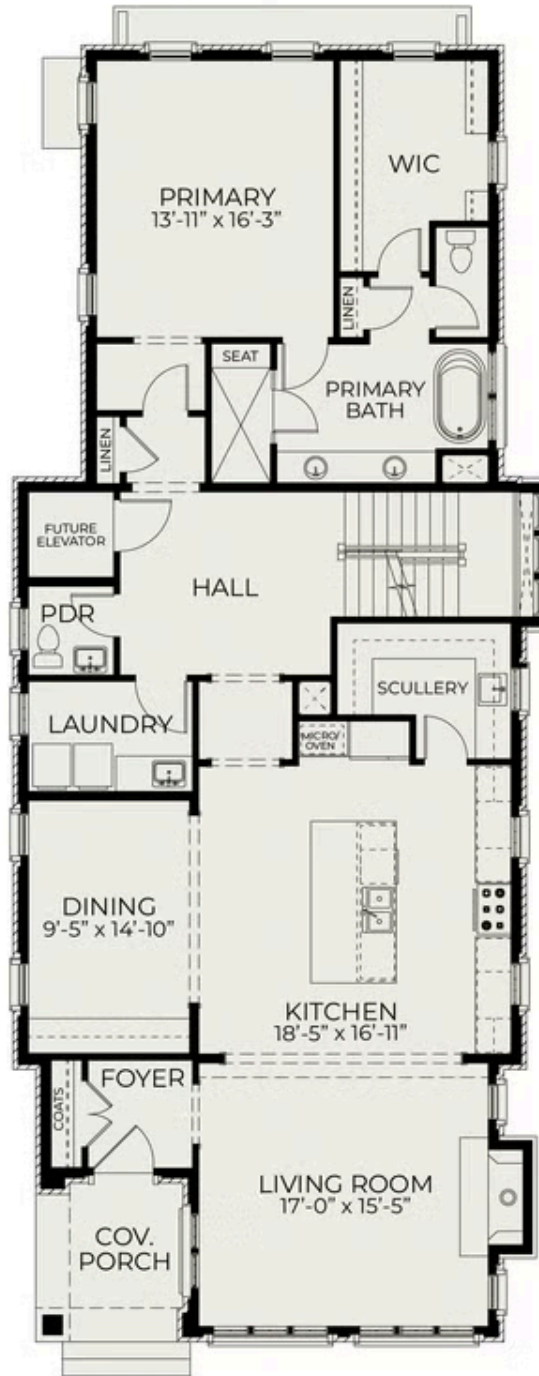


Exterior Rendering

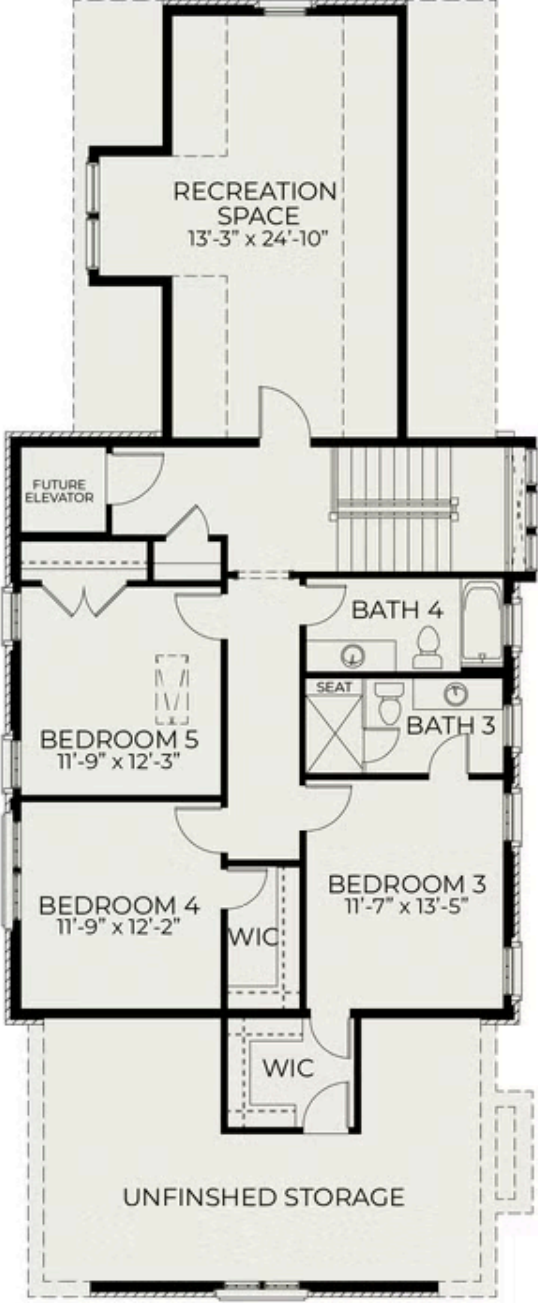


Exterior Rendering

First Floor



Second Floor



Basement

