



152 Coventry Court

\$570,000

BEDROOMS: 3

BATHS: 2 full, 1 half

SQFT: 2,029

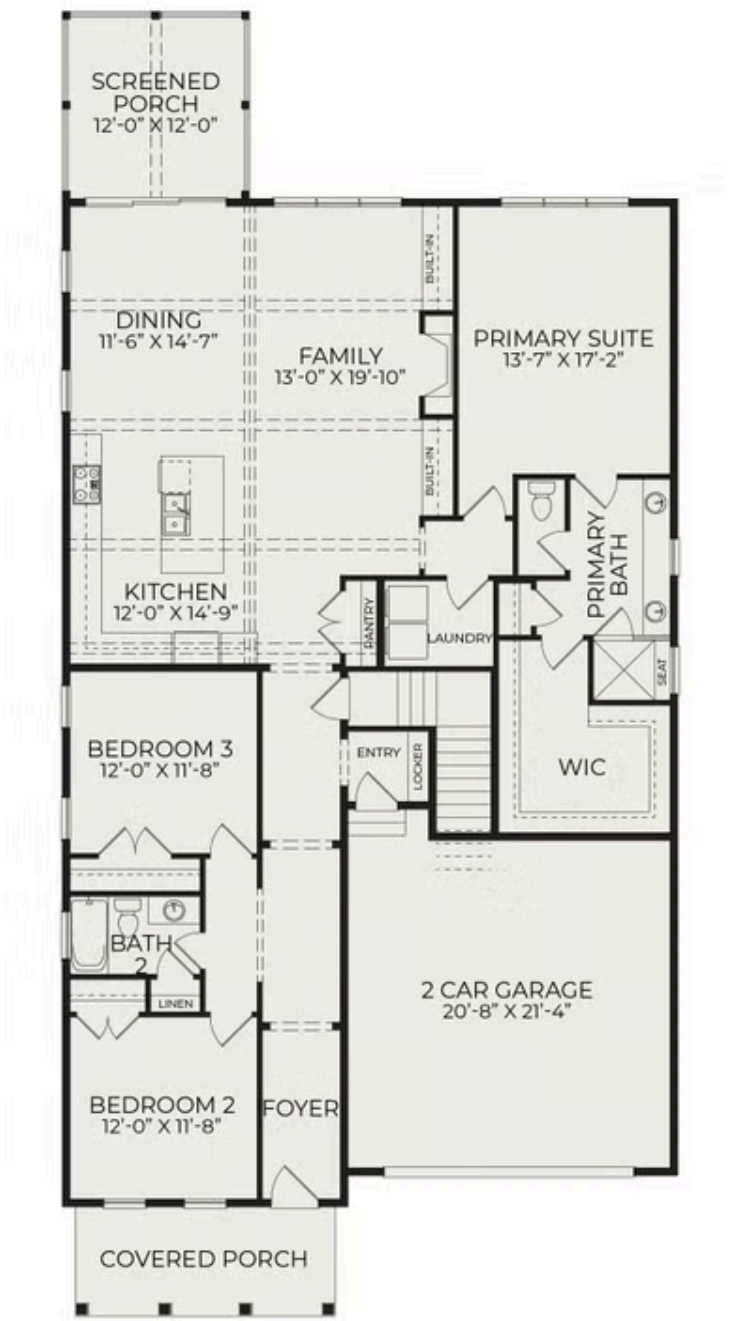
COMMUNITY: Stillwater Harbour

152 Coventry in Brices Creek Harbour features the Cooper floorplan with the Lowcountry elevation. In the home, 3 bedrooms, 2 baths, across 2,029 square feet of well-planned living space. The exterior highlights a brick foundation accent with Hardie® siding in a mix of lap and board-and-batten. Inside, the open concept includes RevWood flooring throughout the main living areas, a spacious family room with a gas fireplace, and a kitchen finished with quartz countertops, Electrolux Gallery appliances, and a walk-in pantry. The primary suite features a tiled bath and a walk-in closet, while two additional bedrooms offer flexibility for family, guests, or office use. A dedicated laundry room with tile flooring adds everyday convenience. Outdoor living is extended with both front and rear porches, perfect for gathering or relaxing. Additional features include crown molding in common areas, Kohler plumbing fixtures, a tankless gas water heater, and a gas furnace. Life in Brices Creek Harbour means enjoying a community surrounded by wooded beauty and easy access to the water. Whether launching a kayak, taking a walk along tree-lined streets, or spending time on the porch, this neighborhood offers a balance of nature and convenience.



Exterior Rendering

First Floor



Second Floor