



154 Coventry Court

\$545,000

BEDROOMS: 3

BATHS: 2 full, 1 half

SQFT: 1,932

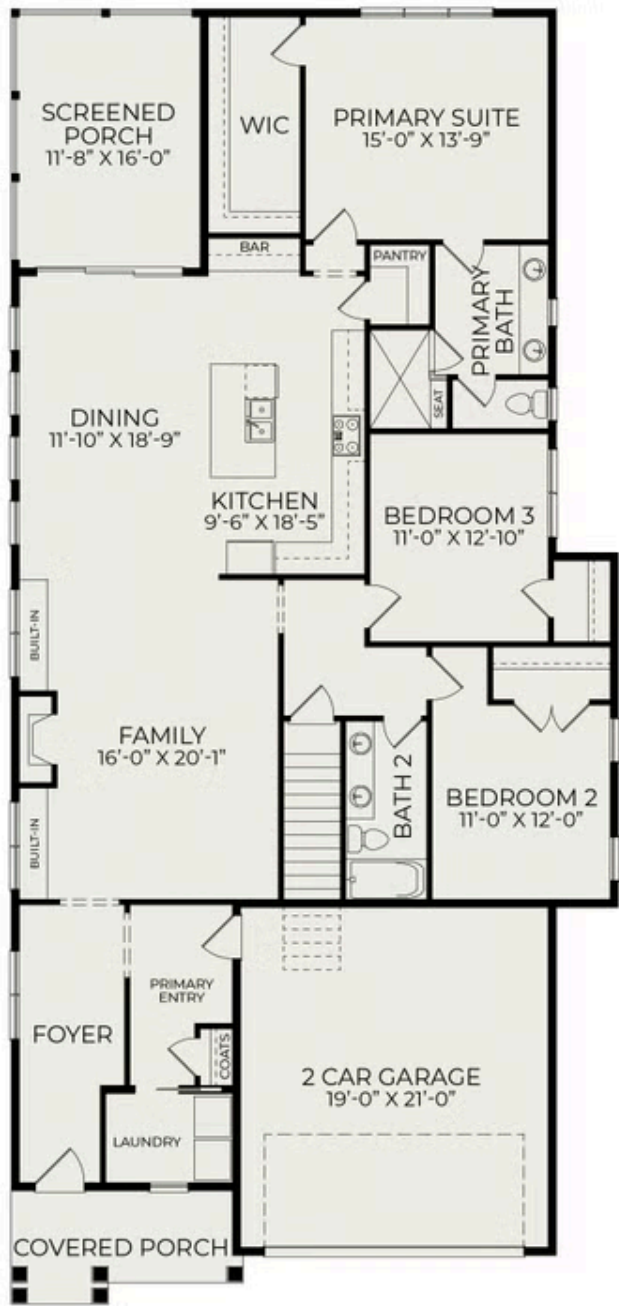
COMMUNITY: Stillwater Harbour

154 Coventry in Brices Creek Harbour showcases the Cameron floorplan with the American Farmhouse elevation — offering 3 bedrooms, 2 baths, and more than 1,900 heated square feet of comfortable, single-level living. The exterior is finished with a brick foundation accent and Hardie® siding in a mix of lap and board-and-batten. Inside, the open design features RevWood flooring throughout the main living areas, a spacious family room centered around a gas fireplace, and a well-appointed kitchen with quartz countertops, Electrolux Gallery appliances, and a walk-in pantry. The primary suite features a tiled bath and a walk-in closet, while two additional bedrooms provide flexibility for guests or a home office. Everyday details like a tiled laundry room, crown molding in the common areas, Kohler fixtures, a tankless gas water heater, and a gas furnace elevate both style and function. Outdoor spaces feature a welcoming front porch and a screened rear porch, providing year-round enjoyment. Brices Creek Harbour is a community where craftsmanship meets convenience. With wooded surroundings and direct access to Brices Creek, it's easy to enjoy time on the water or quiet evenings on the porch — all in a thoughtfully designed neighborhood.



Exterior Rendering

First Floor



Second Floor

