



16 Whithorn Court

\$1,550,000

BEDROOMS: 4

BATHS: 4 full, 1 half

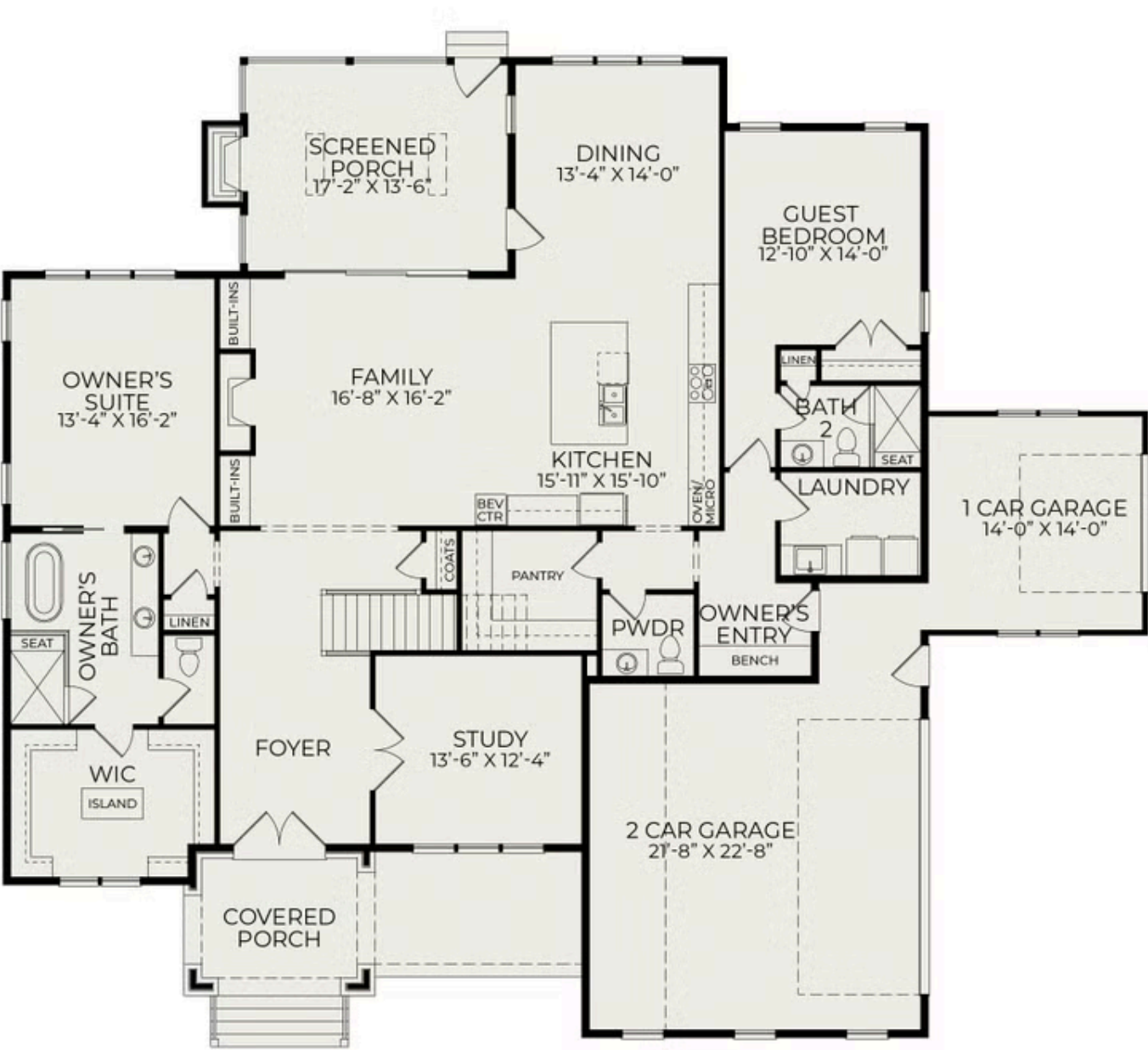
SQFT: 3,602

COMMUNITY: Pinehurst Proper

Experience custom living at its finest in this beautifully crafted home in Pinehurst. Featuring a spacious 3-car garage, this thoughtfully designed residence welcomes you with a foyer that leads to a formal study, perfect for working from home or enjoying quiet moments. The large family room offers built-ins and a cozy gas fireplace, seamlessly connecting to the open kitchen and dining area where a chef's dream kitchen includes a generous island, premium appliances, and a walk-in pantry for ample storage. Step outside to the screened porch, creating an ideal space for year-round outdoor living, while the covered front porch adds additional entertaining options.

The first-floor owner's suite is a private retreat, boasting a luxurious bathroom and an expansive walk-in closet, while an additional guest bedroom and full bath are conveniently located on the main level along with a laundry room and powder room. Upstairs, you'll find two more bedrooms each with private bath access, a spacious rec room, and unfinished storage space offering flexibility for future needs. Every detail has been considered to deliver comfort, elegance, and functionality in this one-of-a-kind Pinehurst home.

First Floor



Second Floor

