



**116 North Village
Parkway**

\$472,000

1 Elevations Available

BEDROOMS: 3

BATHS: 2 full, 1 half

SQFT: 2,001

COMMUNITY: Chatham Park

FLOOR PLAN: Alder A

Lock in a 30-Year Fixed Rate at 1% Below Today's Average! With the use of our preferred lender and attorney, you can secure financing at a rate one percent lower than the daily average. No hassle. No gimmicks. Just a straightforward opportunity designed to give you peace of mind, confidence, and long-term security as you take the next step toward your new home.

A Horizon Collection home by Homes by Dickerson, designed for low-maintenance, single-level living. The Alder is a thoughtfully designed new construction home in the sought-after NoVi neighborhood of Chatham Park in Pittsboro, North Carolina, offering effortless, comfort-first living paired with elevated finishes and a true lock-and-leave lifestyle.

Step inside and the first floor flows effortlessly from a welcoming family room into an open-concept kitchen and dining space, the kind of layout built for everyday ease and easy entertaining. Tucked privately at the back of the main level, the first-floor primary suite offers a peaceful retreat complete with a walk-in closet and a private bath, so single-level living is always within reach. Upstairs, two spacious bedrooms flank a

Horizon collection

The Horizon Collection is a new offering from Homes by Dickerson, created for those ready to simplify without sacrificing style. These are homes for people who'd rather spend their time traveling, entertaining, and enjoying life than maintaining more home than they need. Pairing low-maintenance, single-level living with elevated finishes and smart, functional layouts, every Horizon home is designed for how you live today and built to stay effortless for years to come. With thoughtful, accessibility-forward details and a true lock-and-leave lifestyle, smaller doesn't mean less here. It means **better.**

WHAT IS INCLUDED?

FIRST FLOOR PRIMARY BEDROOM
A serene main-floor retreat designed for effortless single-level living. Wake, unwind, and host with ease, all without a single stair. In a layout that elevates daily comfort and adapts gracefully to every season of life.

LEVER-STYLE DOOR HANDLES
Sleek lever handles replace traditional knobs for smooth, one-hand operation throughout the home. This makes every door easier to open for busy households, children, and anyone who prefers low-effort convenience.

REINFORCED BLOCKING IN FIRST-FLOOR BATHROOMS
Thoughtfully engineered behind the scenes, reinforced walls in showers and toilet areas allow for easy future installation of grab bars, providing peace of mind and cost-effective adaptability as your lifestyle evolves.

NO-STEP THRESHOLDS AND 3'0" WIDE FRONT/BACK DOORS
Barrier-free entries and wider doorways reduce tripping hazards and create generous access for guests, strollers, and everyday movement while enhancing curb appeal.

COMFORT-HEIGHT, ELONGATED TOILETS ON FIRST FLOOR
A refined upgrade you'll appreciate every day. High-rise chair-line seating and elongated bowls make sitting and standing effortless while delivering a subtle, spa-worthy sense of everyday luxury.

FLUSH, LEVEL PORCH SLABS
Step onto the porch without elevation changes, creating a safe and inviting transition to outdoor living for all ages.

HOLIZON collection

WHAT IS INCLUDED?

WIDER 2'8" DOORS TO MAIN LIVING AREAS ON FIRST FLOOR
Generously sized interior doors improve flow between rooms, make furniture placement easier, and help the home feel more open and welcoming.

PRE-WIRED SECURITY PANEL
Your home arrives ready for the future. A pre-wired panel makes integrating modern security and smart-home technology effortless, keeping your residence connected, protected, and beautifully convenient.

ZERO-ENTRY PRIMARY SHOWER
A curb-free shower offers a spa-like experience that is safer, more accessible, and seamlessly integrated for comfortable daily use.

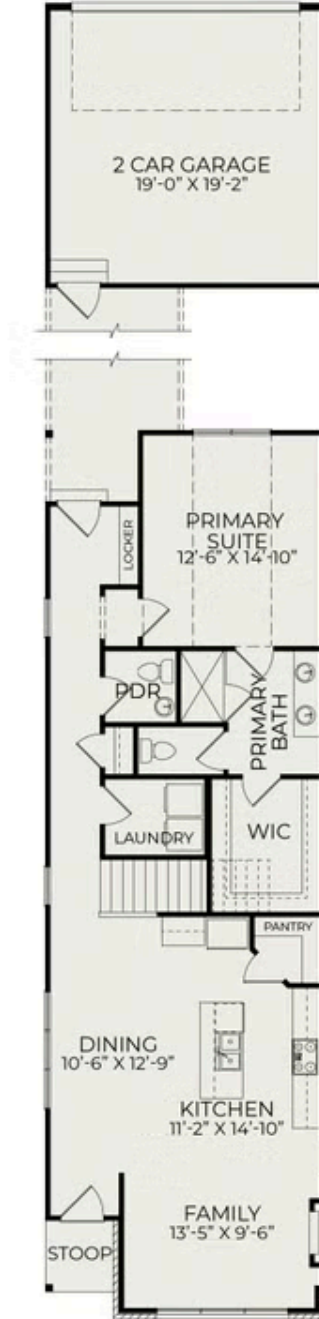
LOW-PROFILE SLAB FOUNDATION
A reduced slab elevation sits closer to grade, minimizing entry steps for easier access, enhanced safety, and a cleaner, more sophisticated exterior profile.

INTEGRATED HANDRAILS
Stylish, architecturally integrated handrails on porches and garage steps provide confident, stable support exactly where it's wanted, all while blending seamlessly into the home's elevated design.

COVERED OUTDOOR PORCHES FOR EXTENDED LIVING
Protected outdoor spaces create seamless indoor-outdoor flow and expand everyday living areas for relaxing, entertaining, or enjoying quiet mornings with a lock and leave lifestyle.

HOLIZON collection

First Floor



Second Floor

