



110 North Village  
Parkway

**\$473,500**

**1 Elevations Available**

**BEDROOMS: 3**

**BATHS: 2 full, 1 half**

**SQFT: 2,142**

**COMMUNITY: Chatham Park**

**FLOOR PLAN: Lumen C**

**Lock in a 30-Year Fixed Rate at 1% Below Today's Average! With the use of our preferred lender and attorney, you can secure financing at a rate one percent lower than the daily average. No hassle. No gimmicks. Just a straightforward opportunity designed to give you peace of mind, confidence, and long-term security as you take the next step toward your new home.**

Introducing the Lumen C Plan, a beautifully crafted home where intentional design meets the way you actually want to live. Modern craftsman architecture sets the tone, while main-floor living, a first-floor primary suite, and a versatile upstairs loft offer flexibility for every season of life. Part of our Horizon Collection, this home features accessibility-forward details like wider doorways, a zero-entry shower, and comfort-height finishes that support comfort for years to come. Located in NoVi at Chatham Park, included landscape maintenance gives you the freedom to travel and return home with ease, while walkable streets and genuine neighbors make community feel effortless. This is the place you've been looking for!



Exterior Rendering

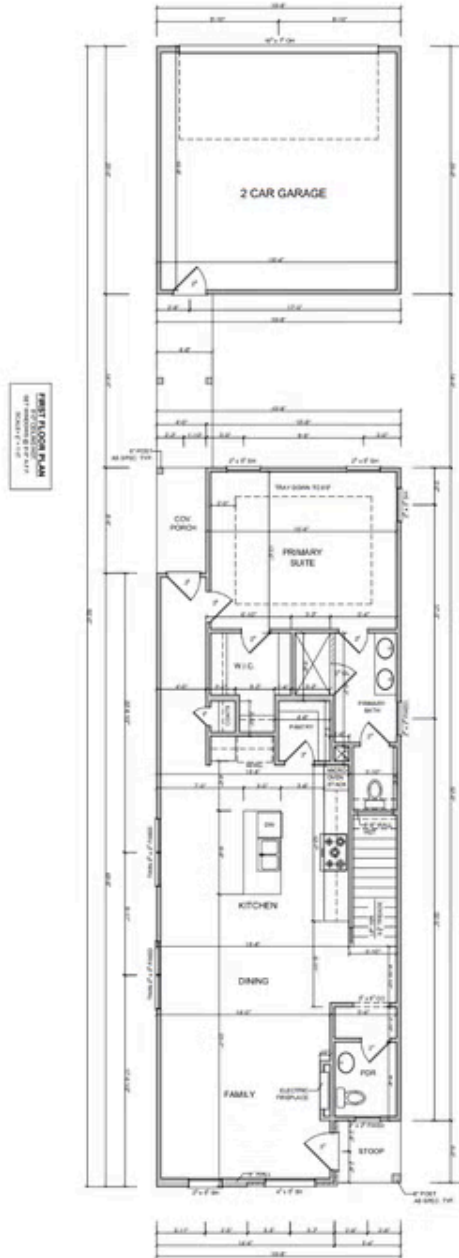


Community Photo



Community Photo

First Floor



Second Floor

