



3301 Founding Place

\$1,750,000

BEDROOMS: 4

BATHS: 5 full, 1 half

SQFT: 3,873

COMMUNITY: The Founding at Blue Ridge

Experience refined living in the Eliza floorplan, a custom built, luxury new construction home located in the coveted neighborhood of The Founding at Blue Ridge. Offering 3,873 square feet of thoughtfully designed space, this residence blends timeless elegance with modern comfort. The main floor features a stunning primary suite with an oversized walk-in closet and a convenient laundry area tucked inside. The spa inspired primary bath includes a stand-alone soaking tub, custom tile work, and designer finishes. The heart of the home is anchored by a beautifully appointed kitchen and dining room, flowing seamlessly into open living spaces ideal for entertaining. Upstairs, you'll find three additional bedrooms, each with its own bath access, a spacious rec room, a second laundry room, and generous walk in storage. Large, oversized windows fill the home with natural light, while a fireplace on the rear porch creates an inviting outdoor retreat. Attention to detail is evident throughout, from the custom millwork and high-end fixtures to the professionally landscaped yard with irrigation and exterior lighting. Ready for move in at the end of February 2026, the Eliza offers a rare opportunity to own a truly one-of-a-kind home in one of Raleigh's most desirable neighborhoods.



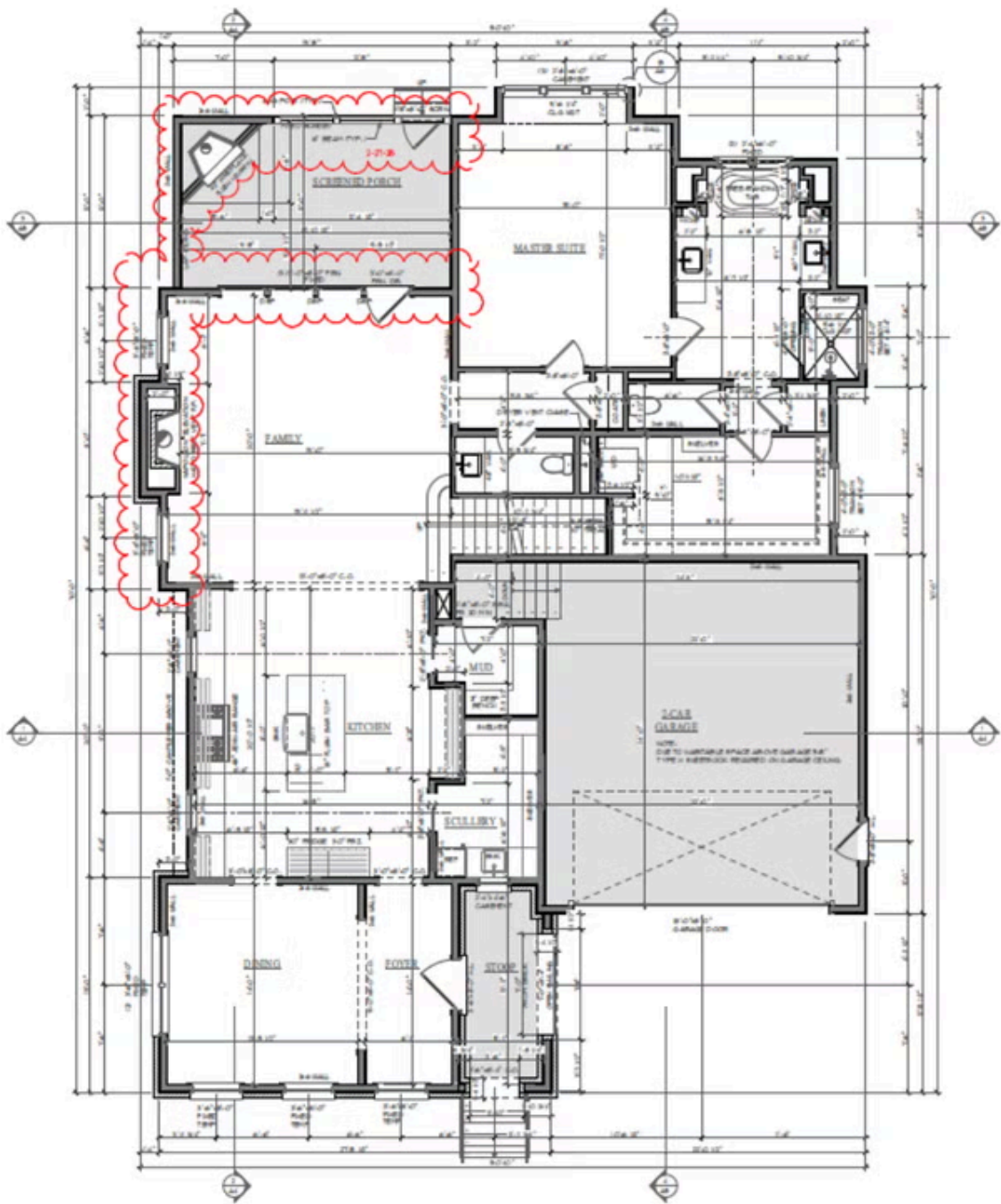
Exterior Rendering

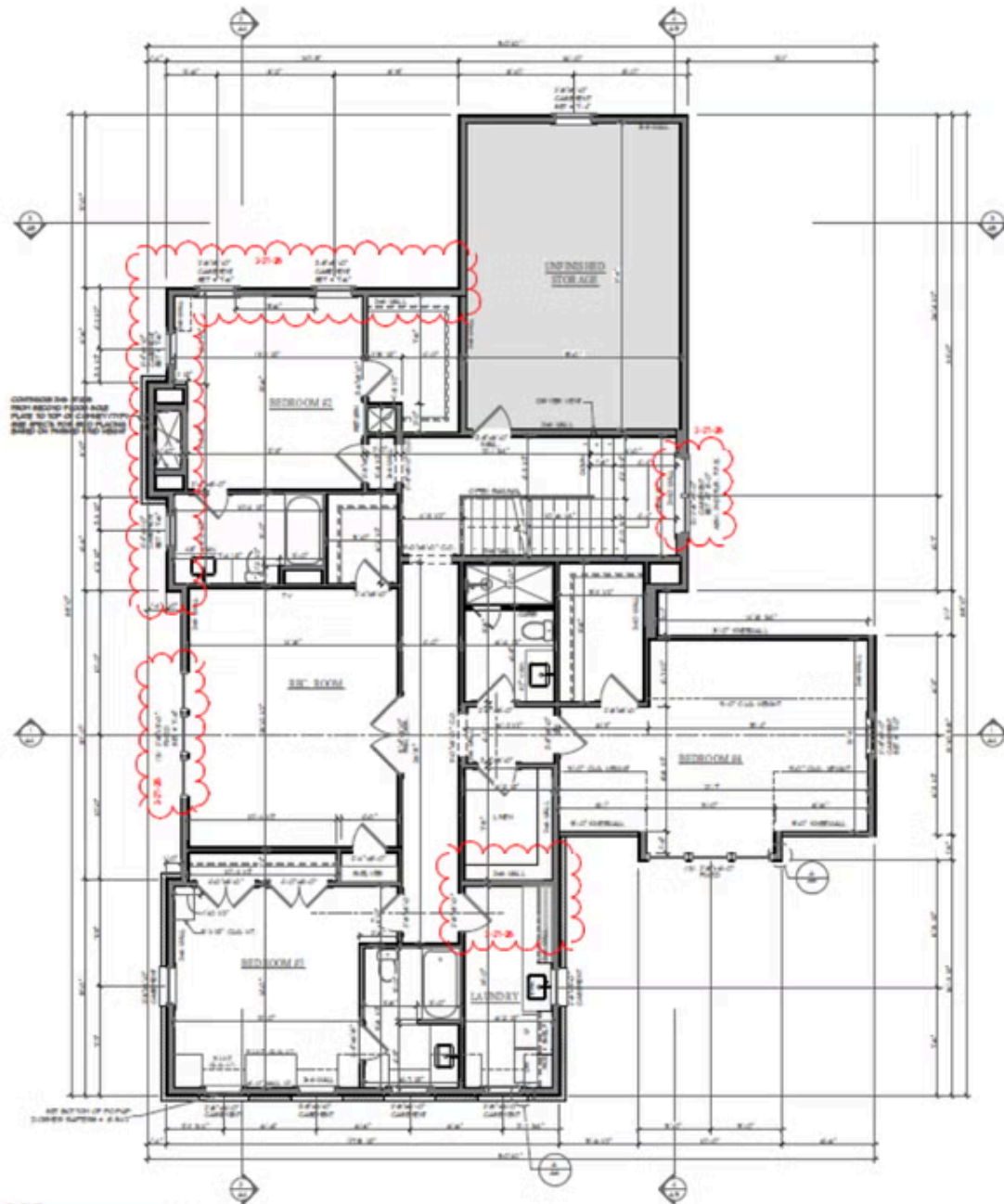


Exterior Rendering



Exterior Rendering





SECOND FLOOR

SCALE 1/8" = 1'-0"