



3324 Founding Place

\$1,650,000

BEDROOMS: 4

BATHS: 4 full, 1 half

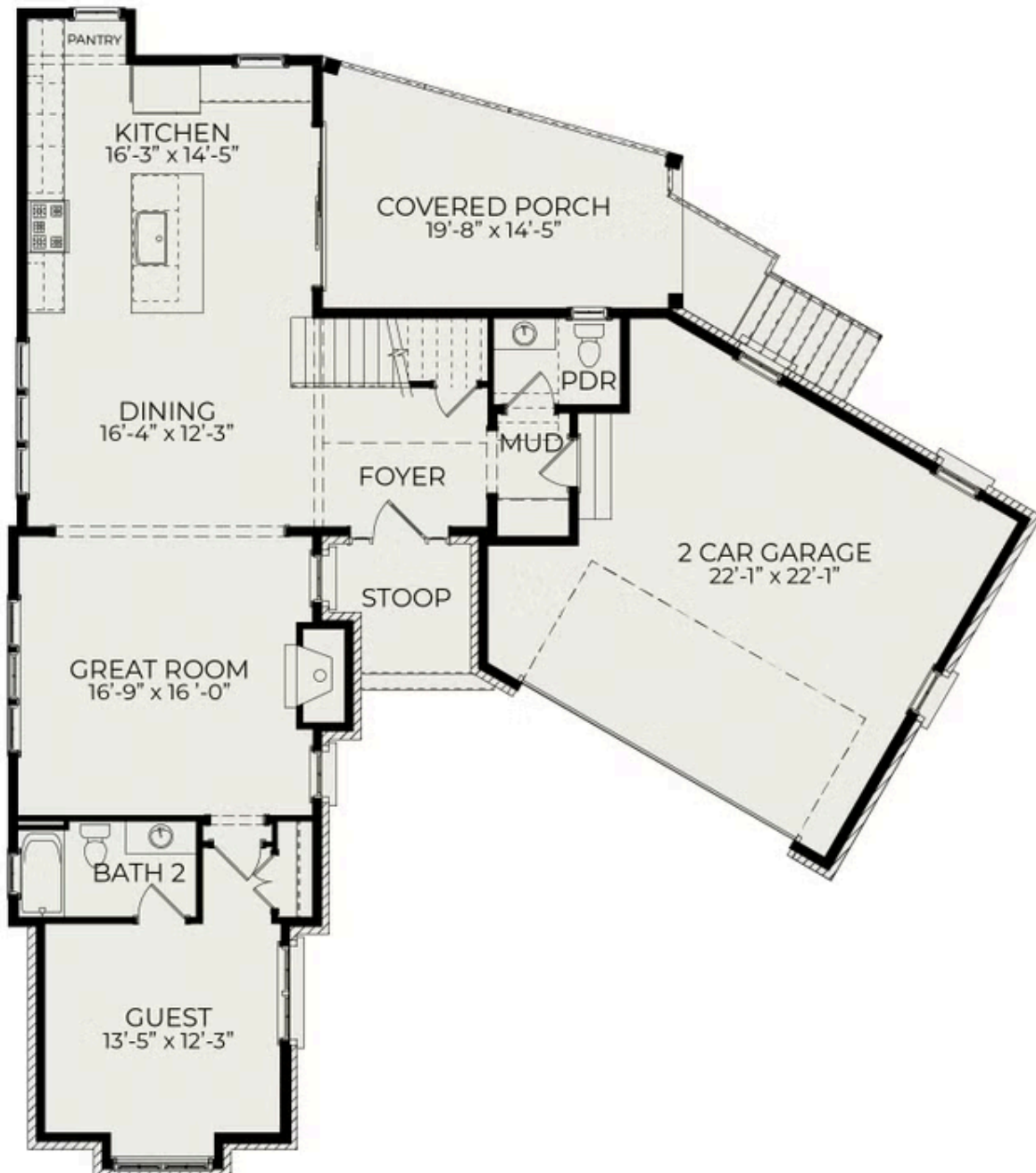
SQFT: 3,542

COMMUNITY: The Founding at Blue Ridge

Step into refined living with this custom-built Adeline plan—a stunning new construction home offering 4 bedrooms, 5.5 bathrooms, and over 3,500 square feet of expertly designed space. Nestled on a beautifully wooded .32-acre lot, this home combines privacy with walkable access to shopping, dining, and the serene Laurel Hills Park. The thoughtful layout includes a main-floor guest suite with private bath, a spacious owner's retreat on the second level, and a third-floor rec room complete with a wet bar—perfect for entertaining. Enjoy the dramatic vaulted ceilings in the bonus room over the garage, adding architectural interest and dimension. Every inch of this home is crafted with high-end custom finishes and features, from the chef's kitchen to the luxurious baths. Whether you're relaxing indoors or enjoying the natural beauty of the lot, this home offers a lifestyle of comfort and convenience.



First Floor



Second Floor



Third Floor

