



3416 Makers Circle

\$2,019,000

BEDROOMS: 5

BATHS: 5 full, 1 half

SQFT: 4,295

COMMUNITY: The Founding at Blue Ridge

Meet the Stella, a magnificent custom luxury home that redefines upscale living in the prestigious Founding at Blue Ridge community. This spectacular walkout basement plan delivers an extraordinary amount of space and flexibility across three finished levels, featuring 5 bedrooms, and an impressive array of living spaces that are truly second to none. The main level sets the tone immediately, showcasing a stunning primary suite with a spa inspired bath and walk in closet, a soaring family room, a chef inspired kitchen with a scullery, a generous dining area, a screened porch, a grill deck, and a mud room, all flowing together in a way that makes everyday living feel like a luxury experience. Upstairs, three additional bedrooms each enjoy their own private bathrooms, accompanied by a dedicated laundry room that makes life just a little bit easier. The finished walkout basement is where the fun truly begins, offering a massive rec room, a dedicated media room, a study/guest bedroom with a full bath and walk in closet, and a covered patio pre framed for a future fireplace, creating the ultimate space for entertaining and relaxing. With its stunning exterior blending brick veneer, vertical siding, and striking architectural details, the Stella is a one-of-a-kind home that has to be seen to be believed.



Example of completed home in
The Founding

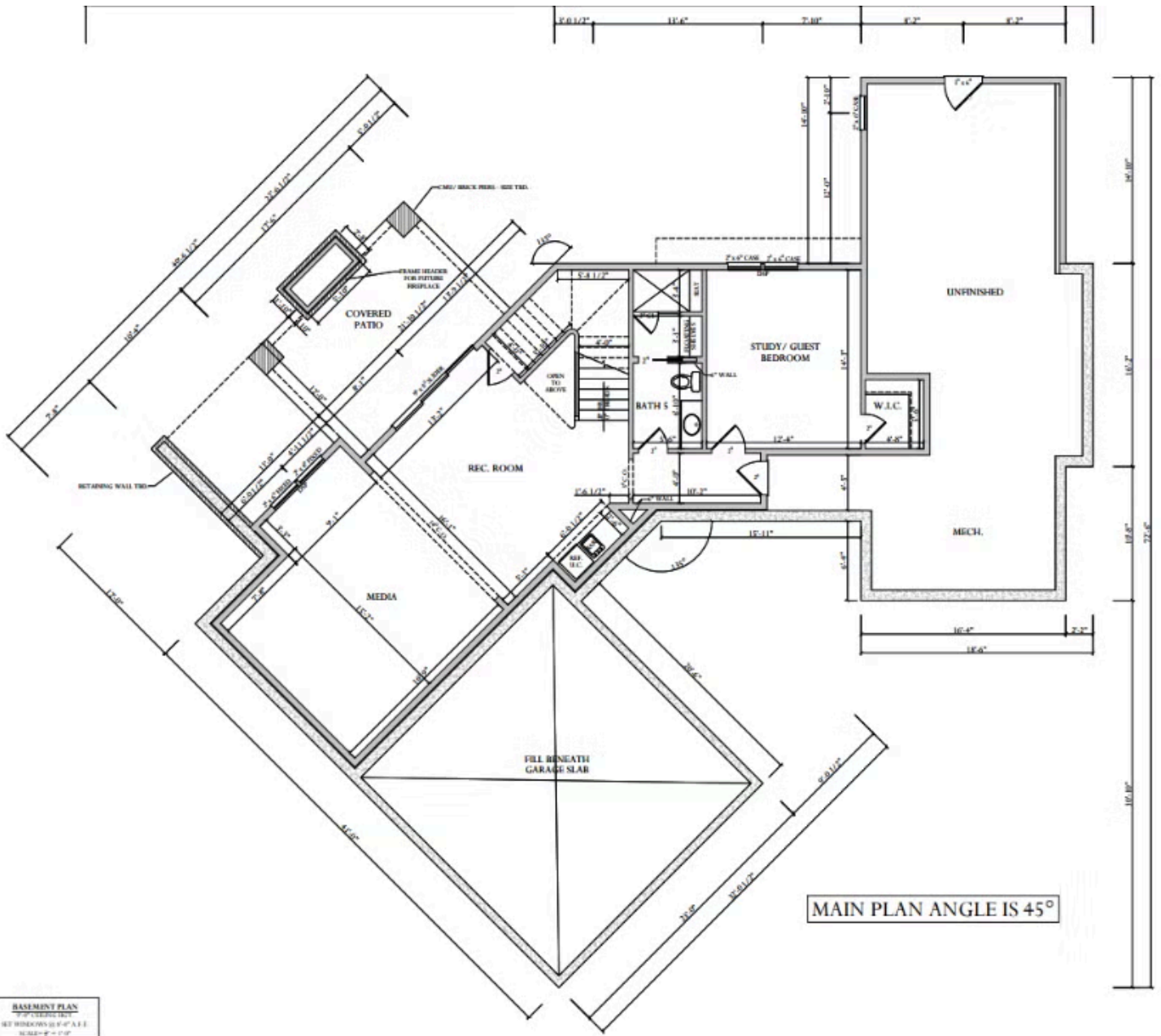


Example of completed home in
The Founding

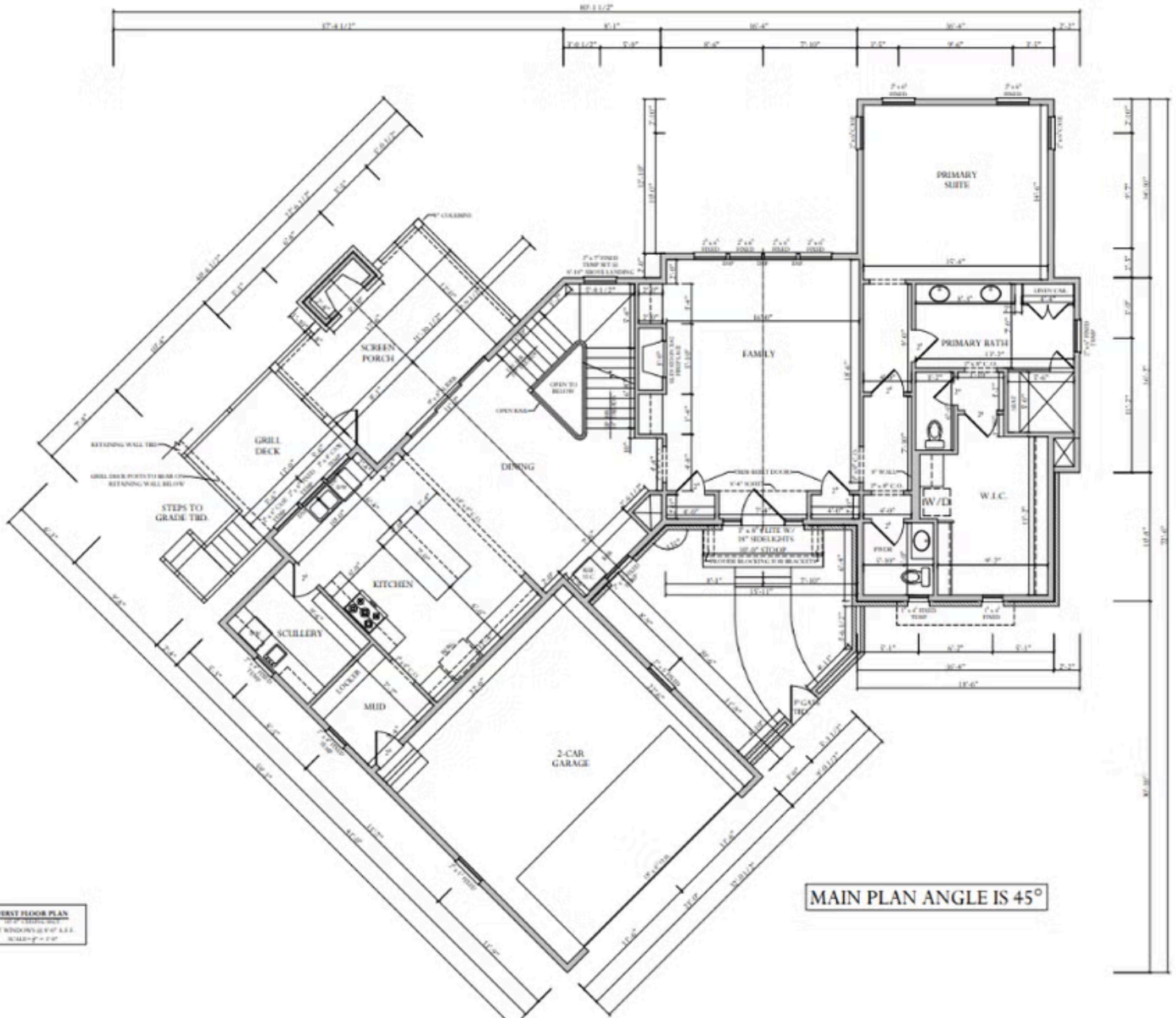


Example of completed home in
The Founding

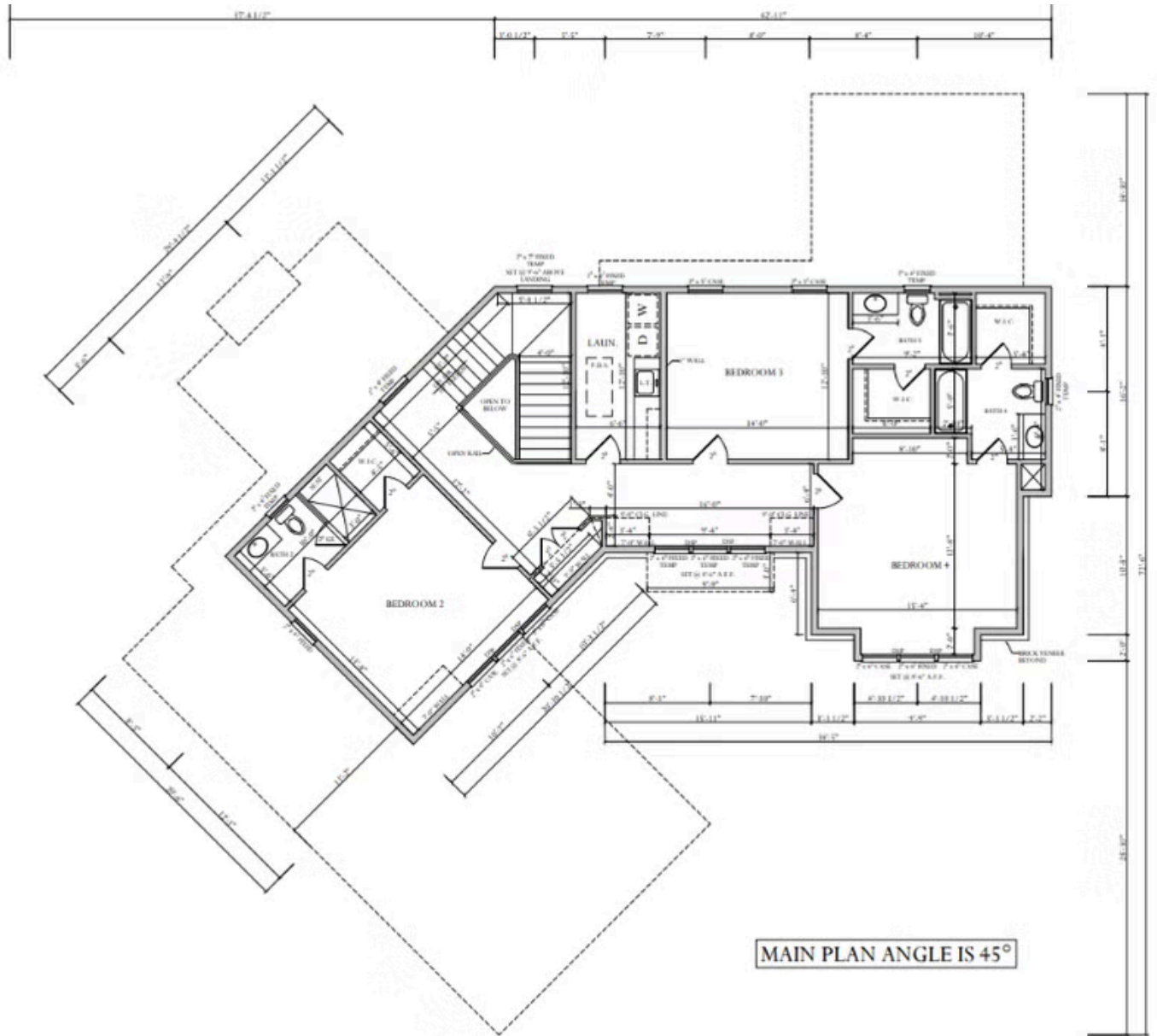
Basement



First Floor



Second Floor



SECOND FLOOR PLAN
11/10/2010
BY: DICKERSON (1) 4/10/10
SCALE: 1/8" = 1'-0"