



8912 Thompson Mill Road

\$949,000

BEDROOMS: 4

BATHS: 4 full, 1 half

SQFT: 3,538

COMMUNITY: Raleigh Proper

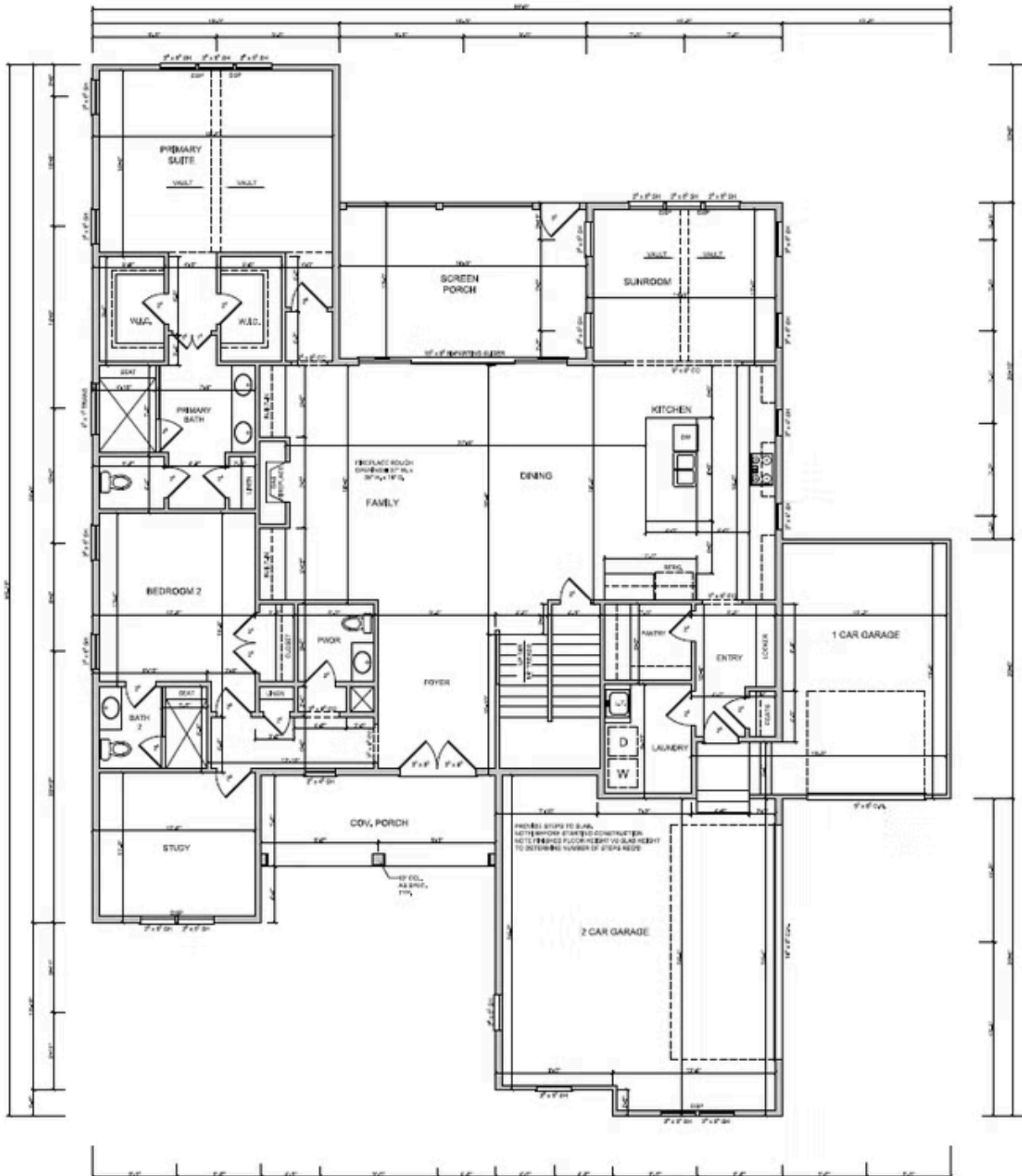
Lock in a 30-Year Fixed Rate at 1% Below Today's Average! With the use of our preferred lender and attorney, you can secure financing at a rate one percent lower than the daily average. No hassle. No gimmicks. Just a straightforward opportunity designed to give you peace of mind, confidence, and long-term security as you take the next step toward your new home.

Discover the perfect blend of elegance and functionality in The Covington, a custom-designed home by Homes by Dickerson, located in the heart of Wake Forest on picturesque Thompson Mill Road. Thoughtfully crafted by our award-winning designers, this residence offers a spacious and inviting layout tailored for everyday living and effortless entertaining.

Step through the foyer into a stunning open-concept living space, where a cozy fireplace and built-ins anchor the family room. The adjacent dining area and gourmet kitchen flow seamlessly together, creating the ideal backdrop for gatherings with family and friends. Just off the kitchen, a bright sunroom offers a peaceful retreat, while the screened porch extends the living space outdoors.



First Floor



Second Floor

