



8916 Thompson Mill Road

\$998,000

BEDROOMS: 4

BATHS: 3 full, 1 half

SQFT: 3,125

COMMUNITY: Raleigh Proper

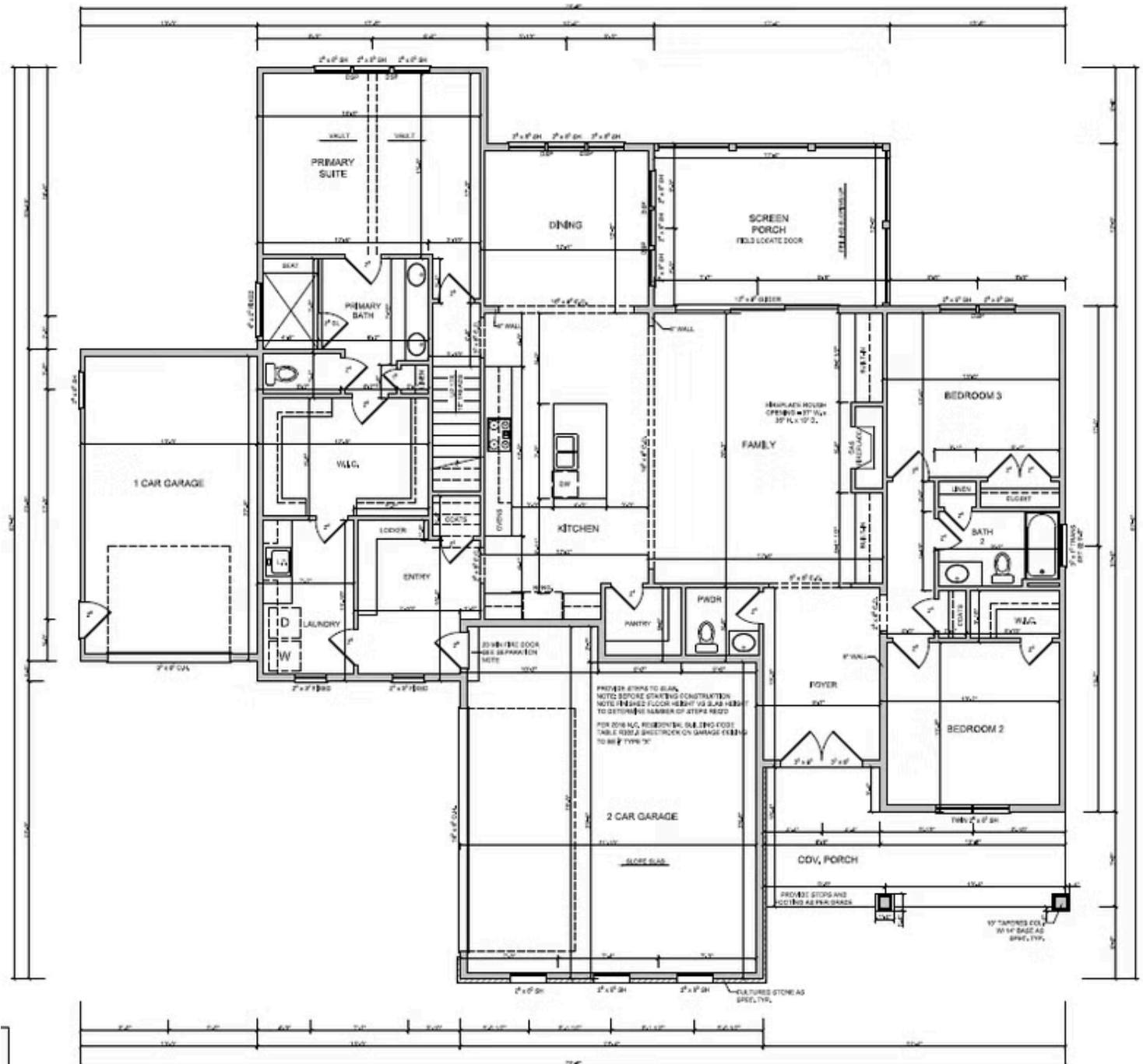
Lock in a 30-Year Fixed Rate at 1% Below Today's Average! With the use of our preferred lender and attorney, you can secure financing at a rate one percent lower than the daily average. No hassle. No gimmicks. Just a straightforward opportunity designed to give you peace of mind, confidence, and long-term security as you take the next step toward your new home.

Crafted by Homes by Dickerson, The Brassfield is a thoughtfully designed custom home nestled on scenic Thompson Mill Road in Wake Forest. This beautifully appointed residence offers both comfort and functionality across two spacious levels.

The first floor welcomes you with a charming foyer that flows seamlessly into an open-concept family room featuring a cozy fireplace and custom built-ins. The heart of the home continues with a designer kitchen and dining area, all opening to a screened back porch perfect for relaxing or entertaining. Three bedrooms are conveniently located on the main level, including a private owner's suite with a generous walk-in closet that connects directly to the laundry room for everyday ease. A powder room adds additional function for



First Floor



Second Floor

