



8916 Thompson Mill Road

\$889,000

BEDROOMS: 4

BATHS: 3 full, 1 half

SQFT: 3,125

COMMUNITY: Raleigh Proper

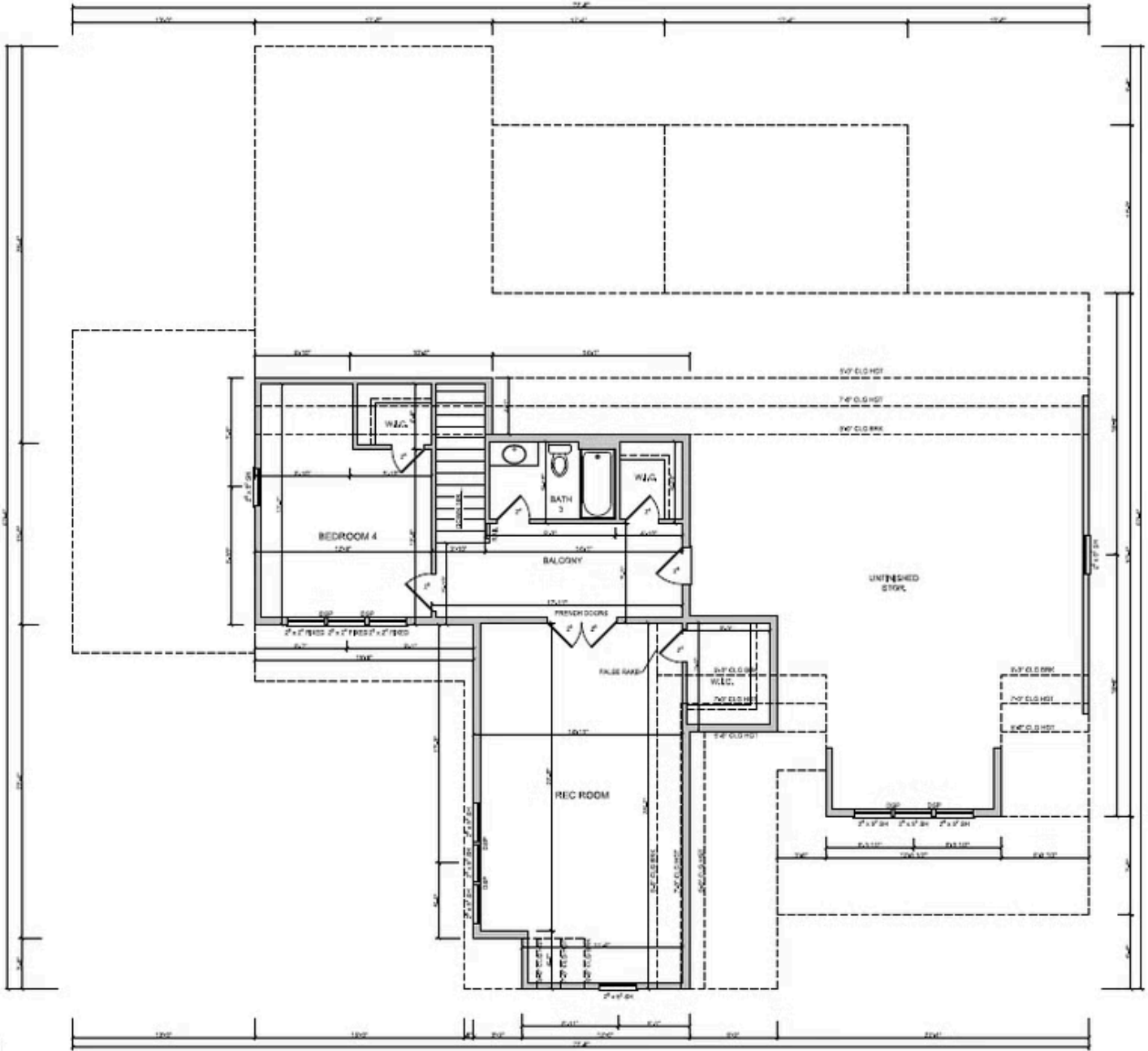
Lock in at 5.8%, fixed. Move now and finance this home at a fixed rate of 5.8%. A rare rate on a home that's ready when you are.*

Crafted by Homes by Dickerson, The Brassfield is a thoughtfully designed custom home nestled on scenic Thompson Mill Road in Wake Forest. This beautifully appointed residence offers both comfort and functionality across two spacious levels.

The first floor welcomes you with a charming foyer that flows seamlessly into an open-concept family room featuring a cozy fireplace and custom built-ins. The heart of the home continues with a designer kitchen and dining area, all opening to a screened back porch perfect for relaxing or entertaining. Three bedrooms are conveniently located on the main level, including a private owner's suite with a generous walk-in closet that connects directly to the laundry room for everyday ease. A powder room adds additional function for guests.



Second Floor



LAN
1/1