



8920 Thompson Mill  
Road

**\$1,050,000**

**BEDROOMS: 4**

**BATHS: 3 full, 1 half**

**SQFT: 3,385**

**COMMUNITY: Raleigh Proper**

Welcome to The Addison, a thoughtfully designed custom home by Homes by Dickerson, perfectly situated on Thompson Mill Road in beautiful Wake Forest, NC.

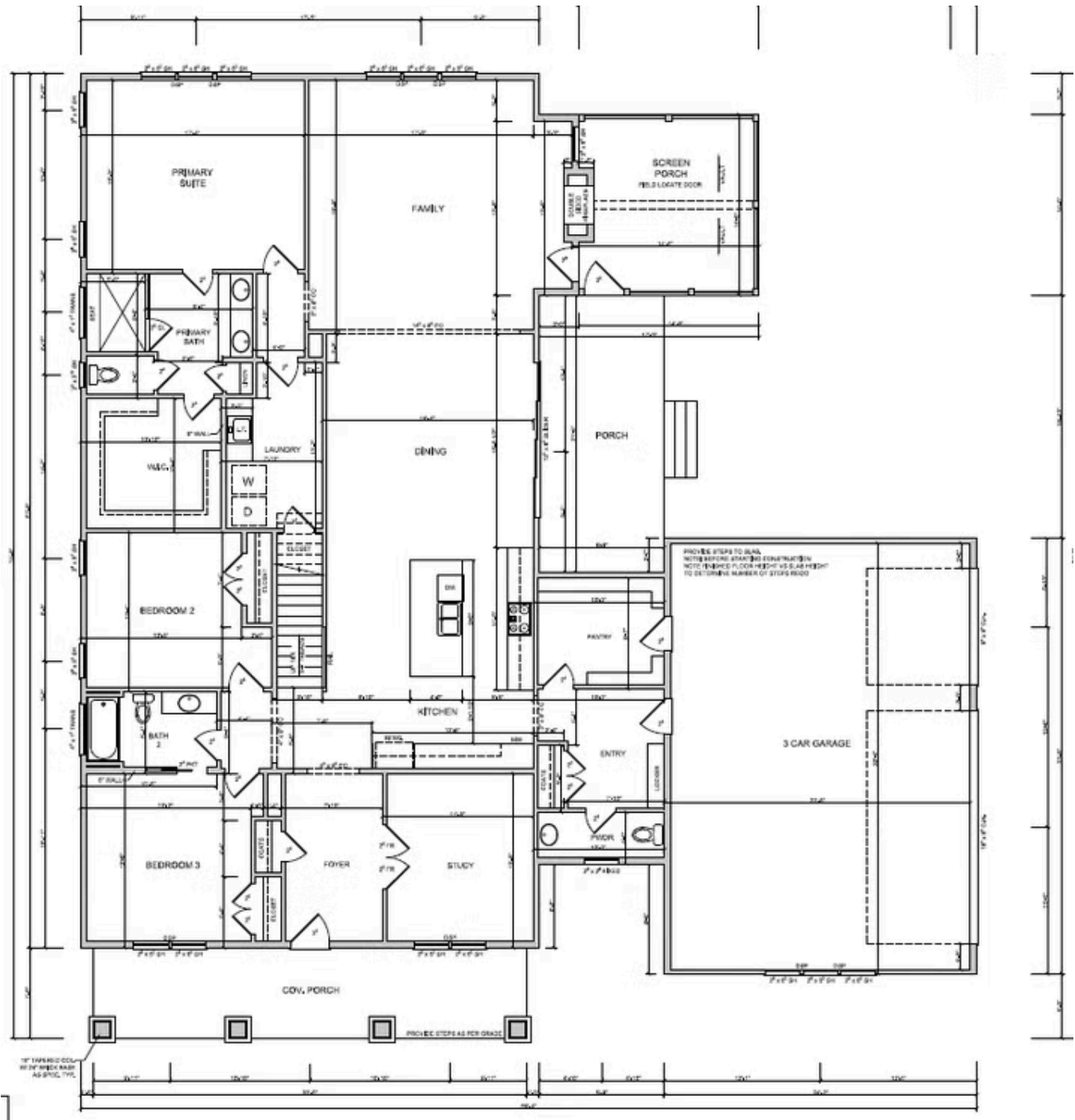
This home features an expansive first-floor layout that blends comfort with elegance. A formal study and inviting foyer lead into a gourmet kitchen complete with a large island, walk-in pantry, and seamless flow to the dining area. The open-concept family room showcases a double-sided fireplace that extends to a vaulted screened porch—ideal for year-round entertaining.

Three spacious bedrooms are located on the main level, including the luxurious primary suite with a spa-inspired bath and generous walk-in closet. A full bath and powder room add convenience and functionality. Upstairs, you'll find a private fourth bedroom, full bath, large bonus room, and ample unfinished storage.

With a three-car garage and interiors curated by award-winning professional designers, every detail in this home has been intentionally crafted for timeless living.



Rendering Coming Soon



Second Floor

