



100 Mossy Falls Way

\$719,000

4 Elevations Available

BEDROOMS: 4

BATHS: 3 full

SQFT: 2,930

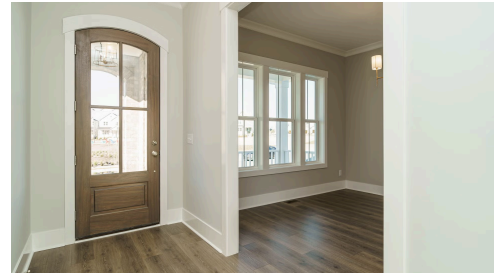
COMMUNITY: Wendell Falls

FLOOR PLAN: Bristol

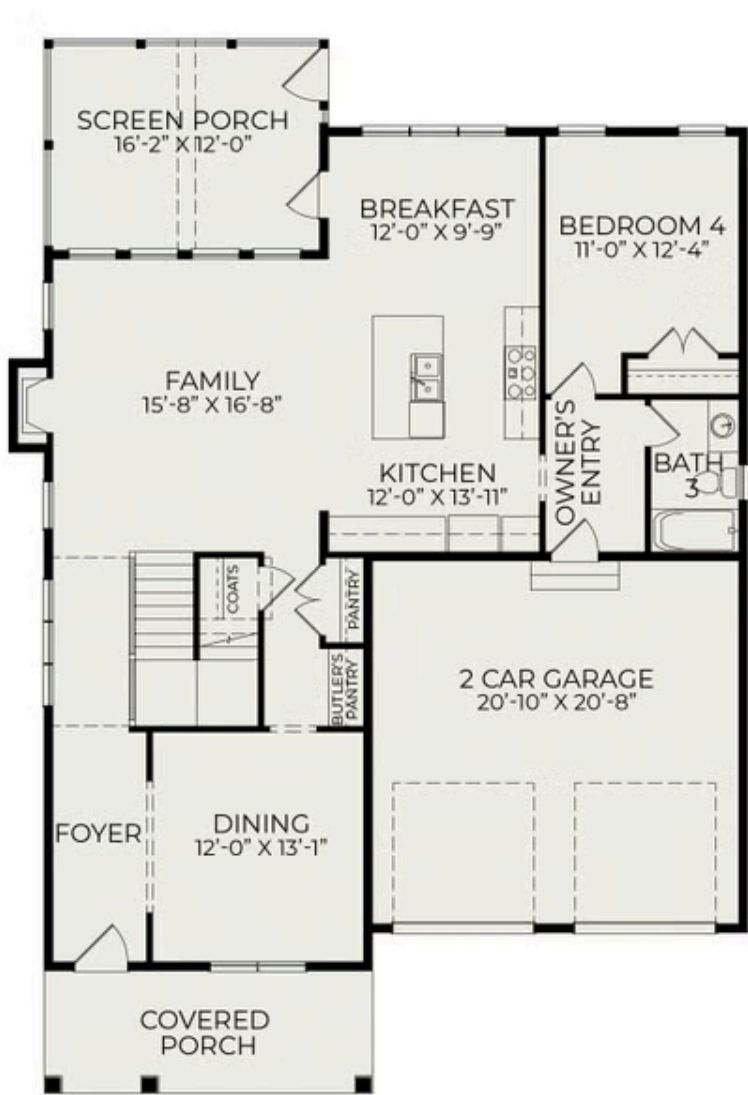
Think you missed the market? Think again. We're offering a 4.99% introductory rate or permanent rates as low as 5.875% on select homes in this community. Contact us today to take advantage of this limited-time opportunity!

Welcome to The Bristol English Cottage. This stunning home offers a bright and airy living space with 10-foot ceilings and an abundance of windows, allowing natural light to flow beautifully throughout. Designed with entertaining in mind, the layout features a formal dining room, a butler's pantry, and an open kitchen, breakfast nook, and living area. Step outside to the spacious covered porch with its charming cathedral ceiling—a perfect spot to relax and unwind. The main level includes a cozy guest suite, while the second floor boasts a luxurious owner's suite with a spa-like bathroom, two additional bedrooms, a shared bathroom with double sinks, and a large recreation room for family fun. A walk-up attic on the third floor offers over 700 square feet of unfinished space, ready for storage or future customization.

Located in the sought-after Wendell Falls community, this home is surrounded by amenities that enhance



First Floor



Second Floor



Third Floor

