



213 Big Bradley Drive

**\$722,000**

**4 Elevations Available**

**BEDROOMS: 4**

**BATHS: 3 full**

**SQFT: 2,653**

**COMMUNITY: Wendell Falls**

**FLOOR PLAN: Bristol**

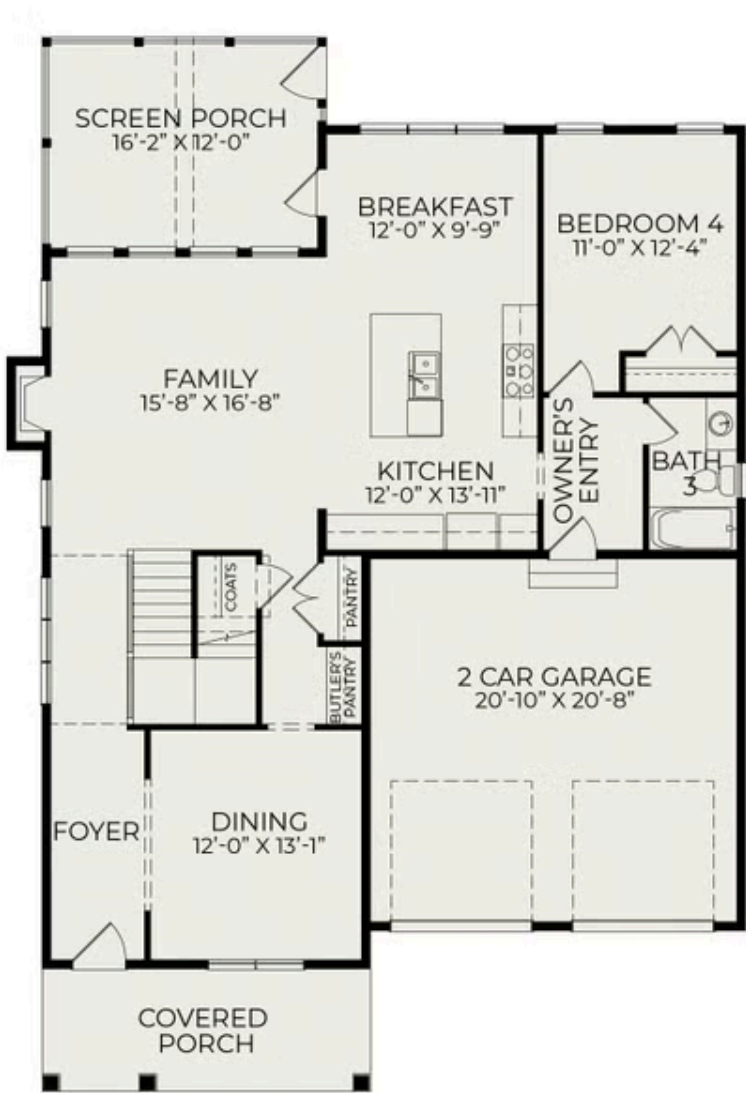
**Think you missed the market? Think again. We're offering a 4.99% introductory rate or permanent rates as low as 5.875% on select homes in this community. Contact us today to take advantage of this limited-time opportunity!**

Introducing the Bristol plan featuring the Classic Cottage Elevation. This home boasts a bright, open layout with soaring 10-foot ceilings and abundant windows, allowing natural light to permeate the main living area. Ideal for entertaining, it includes a formal dining room, a butler's pantry, and an expansive kitchen that flows into the breakfast and living areas. The 12-foot sliding doors open onto a spacious covered porch adorned with a cathedral ceiling.

On the main level, you'll find a comfortable guest suite, while the owner's suite is situated on the second floor, complete with a spa-like bathroom featuring a standalone tub, a separate shower, and a double vanity. Also on this level are two additional bedrooms that share a bathroom equipped with double vanity sinks. A generous Rec Room on the second floor invites the whole family to gather and enjoy quality time



First Floor



Second Floor



Third Floor

