



829 Lunar Light Drive

\$639,000

4 Elevations Available

BEDROOMS: 3

BATHS: 2 full, 1 half

SQFT: 2,661

COMMUNITY: Wendell Falls

FLOOR PLAN: Burlington

Welcome to the Burlington, a home that effortlessly balances everyday functionality with comfortable, stylish living. The main floor impresses with a sprawling family room featuring built-ins, an open kitchen with breakfast area and pantry, a dedicated study, powder room, and a stunning screened porch ideal for year-round outdoor enjoyment. The owner's entry with locker keeps daily comings and goings organized, while the covered front porch adds charming curb appeal to complete the first floor. Upstairs, the generous owner's suite offers a private retreat with a spa-like bath and a spacious walk-in closet, while two additional bedrooms, a full bath, conveniently located laundry room, and an expansive loft round out the upper level. With an attached two-car garage and thoughtful details throughout, the Burlington is a home designed to grow with you.

Life at Wendell Falls offers more than just a beautiful home. Residents enjoy two resort-style pools (one just a short stroll away), a 24-hour fitness center, over 10 miles of scenic trails, and numerous parks and playgrounds. Just minutes away, Treelight Square provides everyday conveniences, boutique shopping,



Completed Burlington Plan

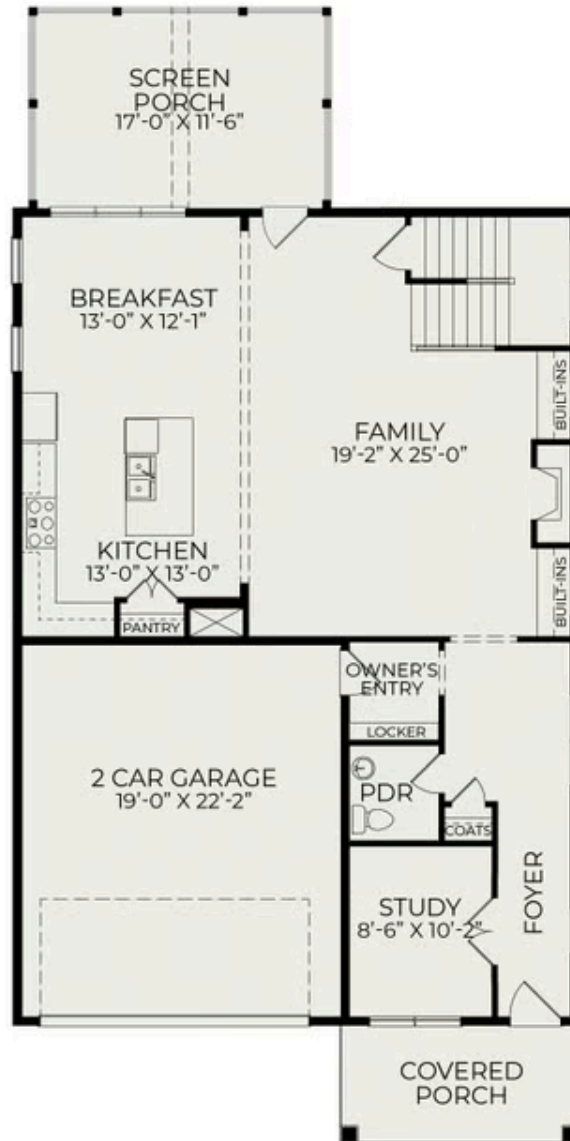


Completed Burlington Plan



Completed Burlington Plan

First Floor



Second Floor

