



116 Bearwallow Forest Way

\$695,000

BEDROOMS: 4

BATHS: 3 full

SQFT: 2,667

COMMUNITY: Wendell Falls

Think you missed the market? Think again. We're offering a 4.99% introductory rate or permanent rates as low as 5.875% on select homes in this community. Contact us today to take advantage of this limited-time opportunity!

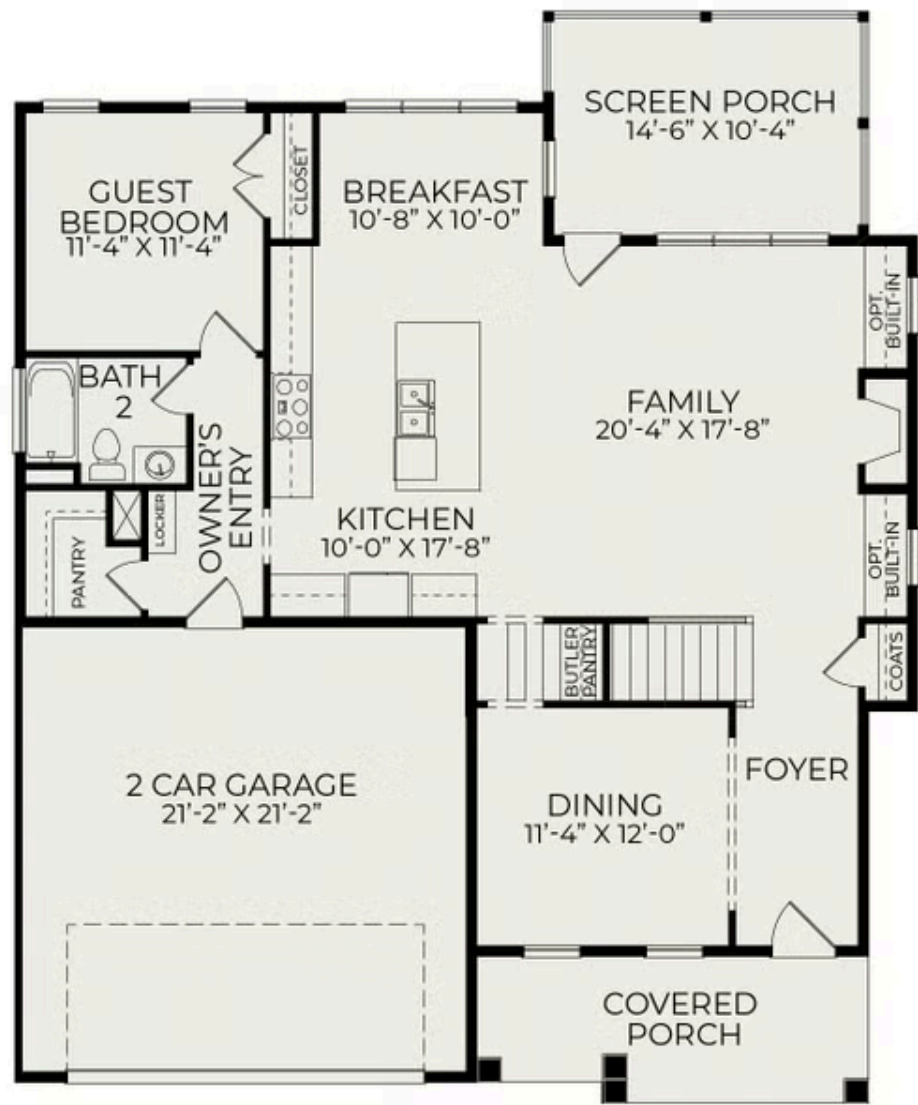
Introducing The Fairfield Plan featuring the Craftsman Elevation, where natural light effortlessly illuminates the expansive main living area. The generous breakfast nook doubles as the primary dining space, allowing the formal dining room to transform into a productive office or study—ideal for those who work from home.

Step outside to the large covered screened porch, perfect for enjoying your morning coffee or unwinding with friends in the evening. The main level also includes a convenient guest suite for visitors.

Ascend to the second floor, where you'll find the owner's suite, complete with a spacious walk-in shower, a free-standing tub, and a double vanity. Two additional bedrooms share a well-appointed bathroom featuring double vanity sinks. A large rec room on this level serves as a vibrant gathering space for family fun,



First Floor



Second Floor

