



1213 Barreto Drive

\$675,000

BEDROOMS: 3

BATHS: 3 full

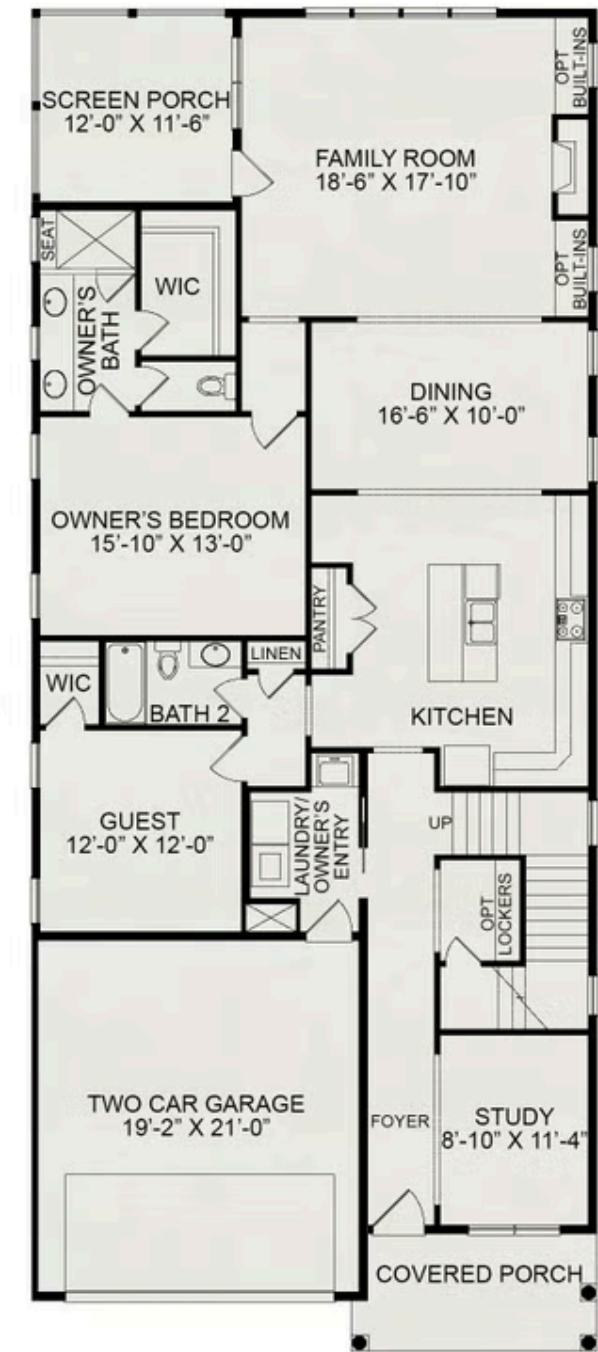
SQFT: 2,637

COMMUNITY: Wendell Falls

Lock in a 30-Year Fixed Rate at 1% Below Today's Average! With the use of our preferred lender and attorney, you can secure financing at a rate one percent lower than the daily average. No hassle. No gimmicks. Just a straightforward opportunity designed to give you peace of mind, confidence, and long-term security as you take the next step toward your new home.

Welcome to The Rosemary Plan featuring the classic Cape Cod Elevation, perfectly designed for comfortable living and entertaining. The open-concept main level offers a spacious family room that flows beautifully into a separate dining room and well-appointed kitchen, creating an ideal space for everyday meals and special gatherings. Step outside to your private screened porch, perfect for enjoying morning coffee or evening relaxation. The main level features a luxurious owner's suite with a spa-like ensuite bathroom, plus a convenient guest bedroom and full bathroom—perfect for visitors or multigenerational living. You'll also love the versatile study and a two-car garage with extra storage space. Upstairs, discover a bright loft area that's perfect for a playroom or home office, an additional bedroom with walk-in closet, a

First Floor



Second Floor

