



1804 Bright Lantern Way

\$590,000

BEDROOMS: 3

BATHS: 2 full, 1 half

SQFT: 2,607

COMMUNITY: Wendell Falls

Think you missed the market? Think again. We're offering a 4.99% introductory rate or permanent rates as low as 5.875% on select homes in this community. Contact us today to take advantage of this limited-time opportunity!

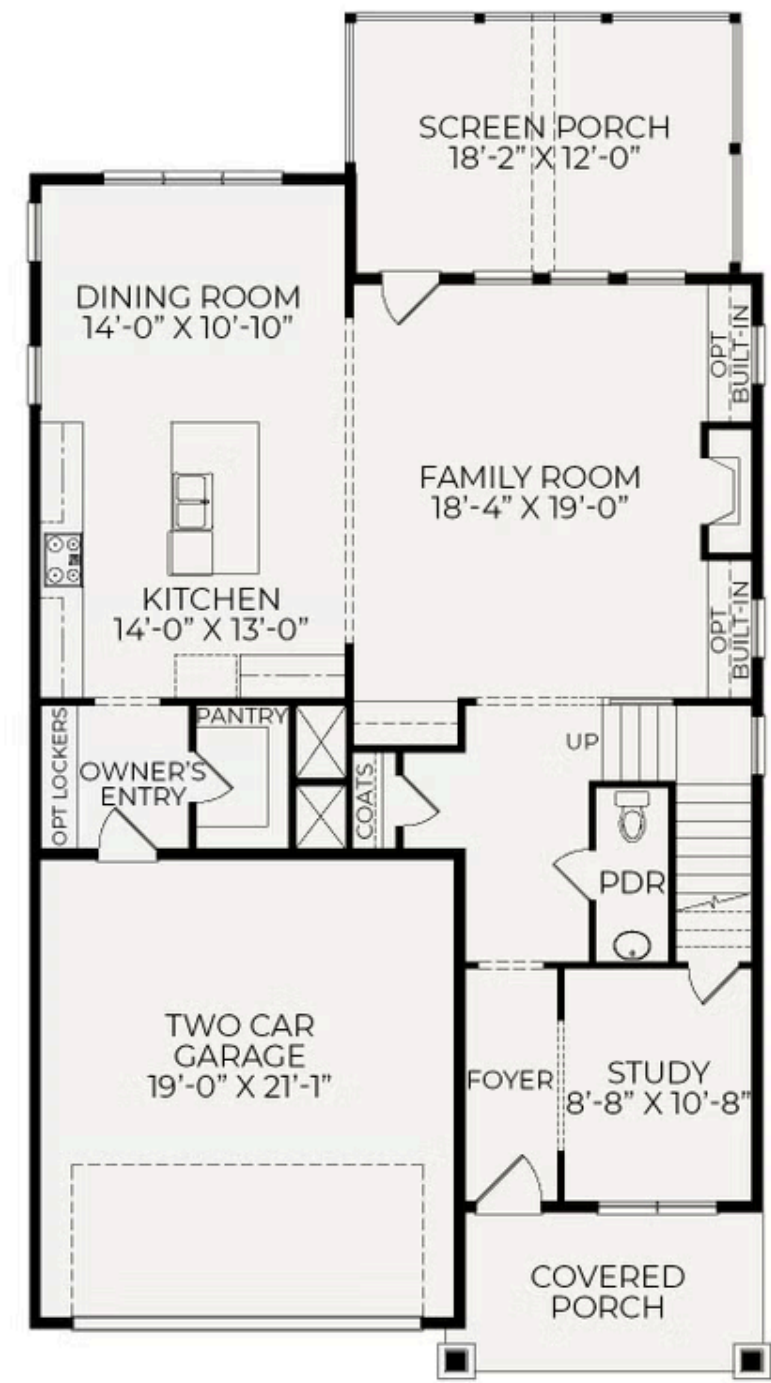
Introducing The Westwood Plan with the Craftsman Elevation. A welcoming large covered front porch greets you as you approach this charming home. Inside, you'll find an office or study at the front, leading into a spacious, open-concept kitchen, family, and dining area. The fireplace, flanked by built-ins, serves as a focal point, adding a cozy, homey atmosphere.

Step outside to the generous covered screened porch, complete with a vaulted ceiling—perfect for enjoying your morning coffee or unwinding with friends in the evening.

On the second floor, a large open rec room leads to the owner's suite, two additional bedrooms, and a full bathroom, offering plenty of space for comfort and relaxation.



First Floor



Second Floor

