



201 Wash Hollow Drive

\$719,000

BEDROOMS: 4

BATHS: 3 full

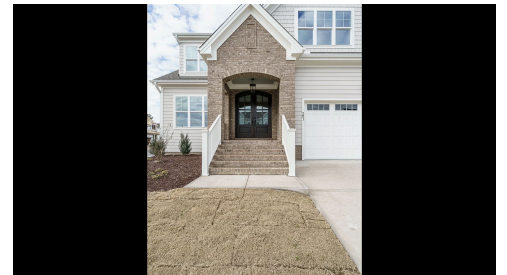
SQFT: 3,008

COMMUNITY: Wendell Falls

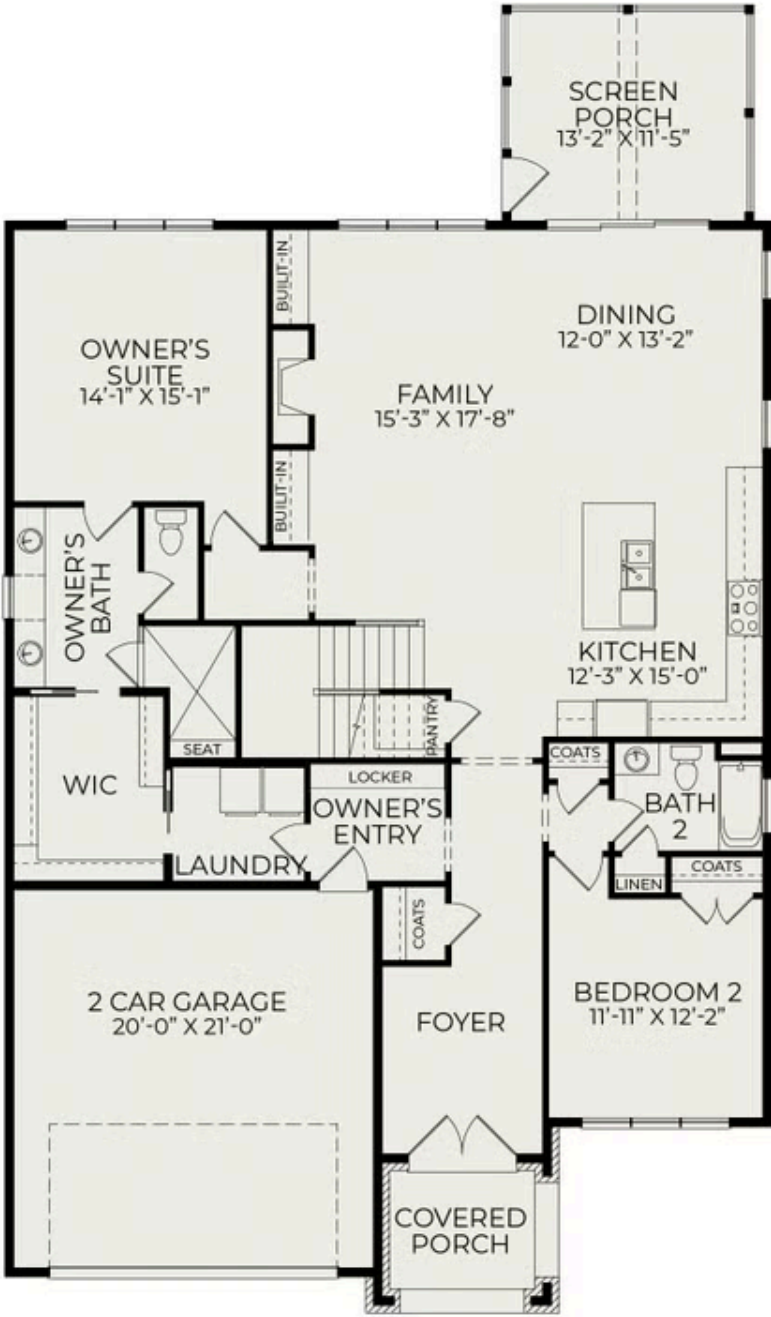
Think you missed the market? Think again. We're offering a 4.99% introductory rate or permanent rates as low as 5.875% on select homes in this community. Contact us today to take advantage of this limited-time opportunity!

The stunning Mayfair offers a thoughtfully designed layout with both the primary and a guest suite conveniently located on the main floor. Expansive sliding doors lead to a spacious screened porch, creating a seamless indoor-outdoor living experience. Upstairs, you'll find two additional bedrooms, a full bath, a generous rec room, and ample storage, providing plenty of space for relaxation and functionality.

Situated in the sought-after Wendell Falls community, this home is surrounded by exceptional amenities that elevate everyday living. Enjoy access to two community pools—one just steps from your door—a 24-hour fitness center, over 10 miles of scenic trails, and multiple parks and playgrounds. Just a short drive away, Treelight Square offers a Publix, boutique shopping, essential services, and a variety of dining options. With modern comforts, timeless style, and an unbeatable location, The Mayfair is ready to



First Floor



Second Floor

