



205 Wash Hollow Drive

\$729,000

BEDROOMS: 4

BATHS: 3 full

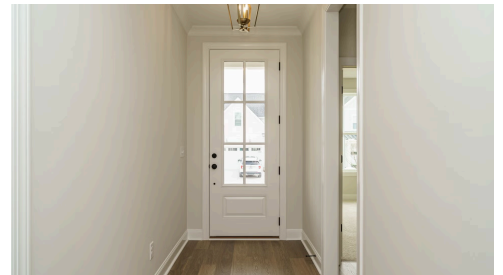
SQFT: 2,954

COMMUNITY: Wendell Falls

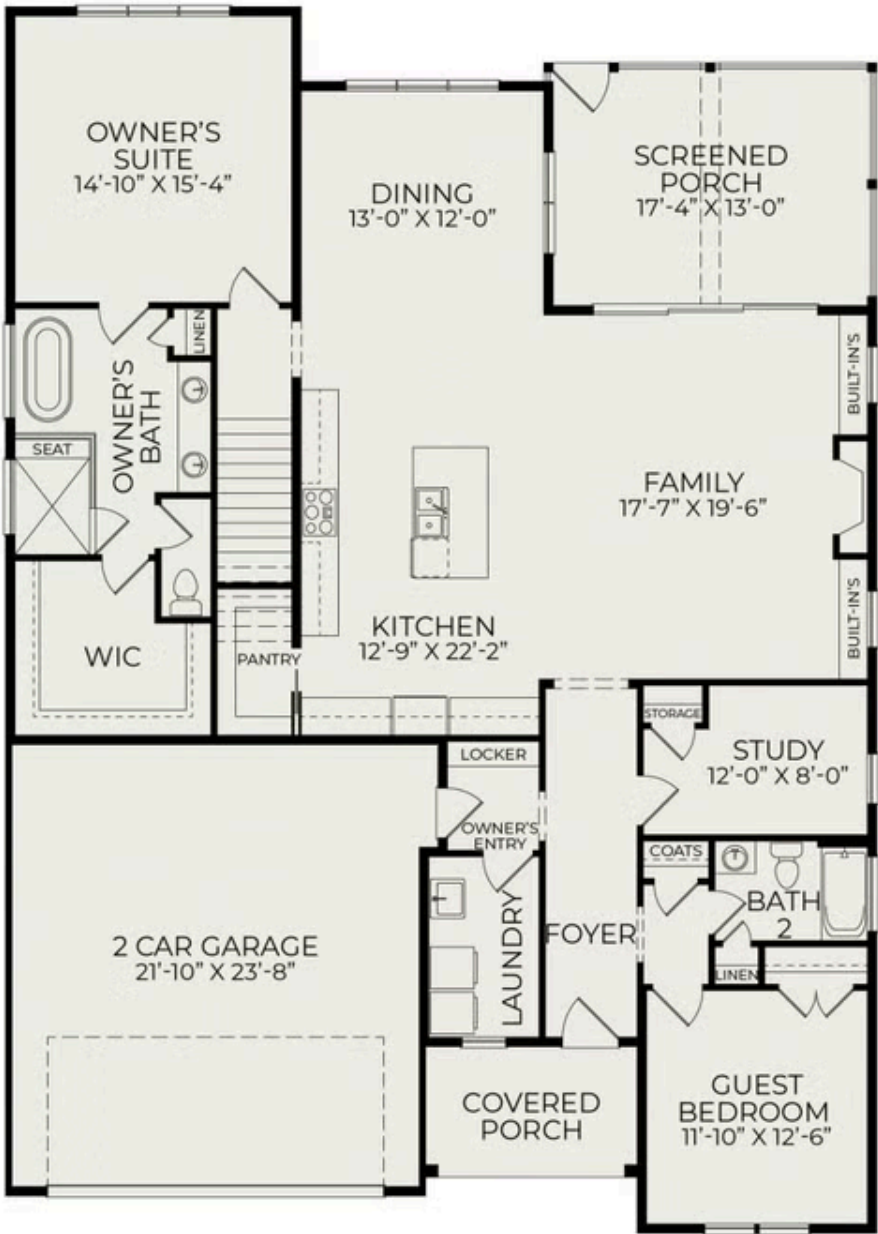
Think you missed the market? Think again. We're offering a 4.99% introductory rate or permanent rates as low as 5.875% on select homes in this community. Contact us today to take advantage of this limited-time opportunity!

Welcome to The Seabrook Plan featuring the charming English Cottage Elevation, designed with entertaining in mind. The large kitchen and main living area create an elegant and bright open space, perfect for gatherings with family and friends. Expansive 12-foot sliders seamlessly connect the indoors to an oversized covered screen porch (17' x 13'), where you can enjoy your morning coffee or unwind in the evening. The owner's suite is conveniently located on the main level and boasts a spa-like ensuite bathroom, complete with a stunning stand-alone soaking tub, a spacious walk-in shower, and a double vanity. Additionally, a guest suite and a study on the main floor offer versatility and comfort for visitors or work-from-home opportunities.

The second floor features two bedrooms and two bathrooms, alongside a large, bright open loft that



First Floor



Second Floor

