



220 Big Bradley Drive

\$698,000

BEDROOMS: 4

BATHS: 3 full

SQFT: 2,893

COMMUNITY: Wendell Falls

Think you missed the market? Think again. We're offering a 4.99% introductory rate or permanent rates as low as 5.875% on select homes in this community. Contact us today to take advantage of this limited-time opportunity!

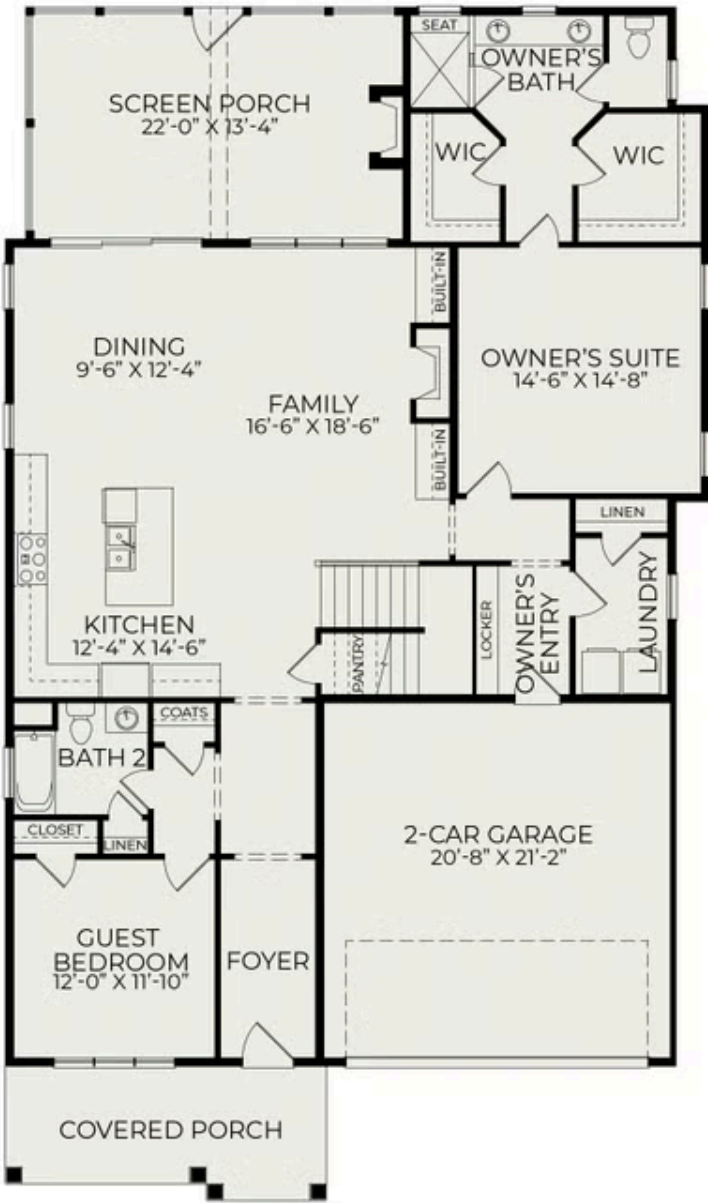
Introducing The Harper – a stunning home designed for comfort and style. This 4-bedroom, 3-bathroom residence includes a spacious rec room and a large screened porch featuring an additional fireplace, all set on a wooded lot offering serene, private views. The east-facing backyard ensures you can fully enjoy the screened porch and its fireplace while taking in the natural surroundings.

The layout is thoughtfully designed with the primary and guest bedrooms on the main floor. Upstairs, you'll find two additional bedrooms, a versatile rec room (which could also serve as a fifth bedroom), a full bath, and abundant storage space.

Residents of Wendell Falls have access to exceptional amenities, including two pools (one just steps from



First Floor



Second Floor

