



333 Catheys Creek Circle

\$665,000

BEDROOMS: 3

BATHS: 3 full

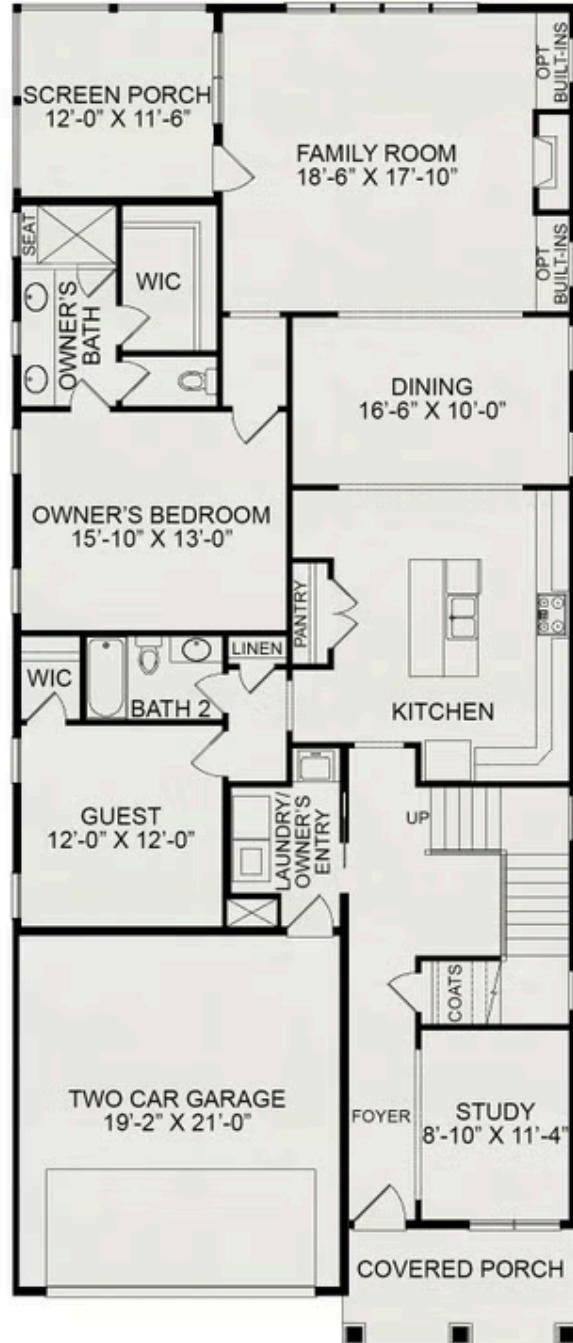
SQFT: 2,697

COMMUNITY: Wendell Falls

Discover the Rosemary plan, a client favorite that you could call home in the vibrant Wendell Falls community! Featuring an impressive 2,697 square feet of beautifully designed living space, this home boasts a luxurious main-level primary suite with an ensuite bathroom and walk-in closet, a versatile study perfect for working from home, and a convenient guest bedroom on the first floor. The open-concept kitchen, dining, and living areas create the ideal space for entertaining, while upstairs you'll discover a spacious loft and another generous bedroom with convenient bathroom access. With a covered front porch, charming craftsman-style exterior with stone accents, and a two-car garage, the Rosemary Craftsman combines style and functionality in one of the Triangle's most sought-after neighborhoods.

Life at Wendell Falls offers more than just a beautiful home. Residents enjoy two resort-style pools (one just a short stroll away), a 24-hour fitness center, over 10 miles of scenic trails, and numerous parks and playgrounds. Just minutes away, Treelight Square provides everyday conveniences, boutique shopping,

First Floor



Second Floor

