



357 Catheys Creek Circle

\$662,000

BEDROOMS: 3

BATHS: 3 full

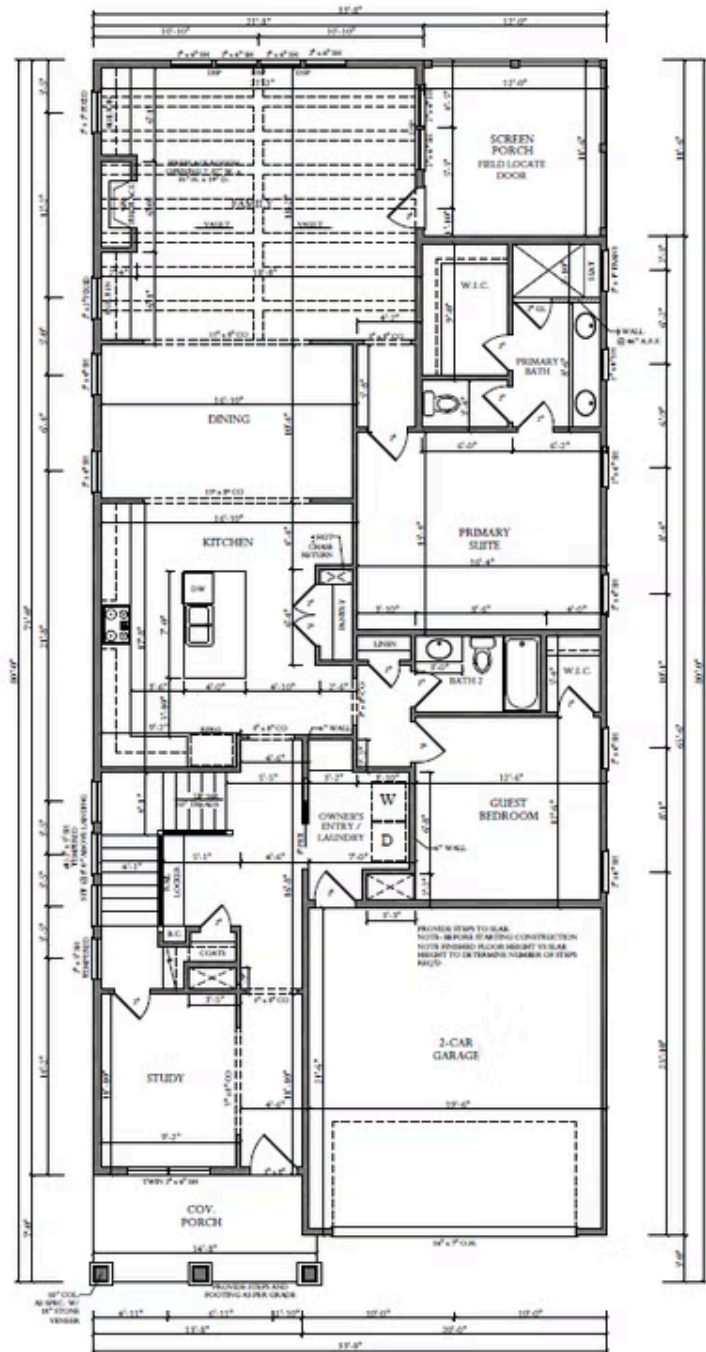
SQFT: 2,659

COMMUNITY: Wendell Falls

Discover the Rosemary plan, a client favorite that you could call home in the vibrant Wendell Falls community! Featuring an impressive 2,659 square feet of beautifully designed living space, this home boasts a luxurious main-level primary suite with an ensuite bathroom and walk-in closet, a versatile study perfect for working from home, and a convenient guest bedroom on the first floor. The open-concept kitchen, dining, and living areas create the ideal space for entertaining, while upstairs you'll discover a spacious loft and another generous bedroom with convenient bathroom access. With a covered front porch, charming craftsman-style exterior with stone accents, and a two-car garage, the Rosemary Craftsman combines style and functionality in one of the Triangle's most sought-after neighborhoods.

Life at Wendell Falls offers more than just a beautiful home. Residents enjoy two resort-style pools (one just a short stroll away), a 24-hour fitness center, over 10 miles of scenic trails, and numerous parks and playgrounds. Just minutes away, Treelight Square provides everyday conveniences, boutique shopping, and an array of dining destinations.

First Floor



Second Floor

