



845 Lunar Light Drive

\$675,000

BEDROOMS: 3

BATHS: 3 full

SQFT: 2,620

COMMUNITY: Wendell Falls

Meet the Rosemary Cape Cod, a charming and incredibly functional floor plan that brings effortless one level living to the heart of Wendell Falls. This gorgeous home offers 3 bedrooms and 3 bathrooms with a layout designed to impress, featuring the owner's suite, a guest bedroom, and a full laundry all conveniently located on the main floor. The first floor is an absolute showstopper, boasting a massive family room with optional built ins, a well-appointed kitchen with pantry, a generous dining area, a private study, and a screened porch perfect for soaking up those beautiful Carolina evenings. The owner's suite is nothing short of luxurious, complete with a spa inspired bath, walk in closet, and direct access to the screened porch for your own private outdoor retreat. Upstairs, a spacious loft, a third bedroom with a full bath, and ample unfinished storage give your family all the flexibility they could ever want. With its stunning Cape Cod exterior featuring classic shutters, a covered front porch, and a 2-car garage, the Rosemary is as beautiful on the outside as it is on the inside.

Enjoy all the incredible amenities of Wendell Falls which include two pools, a 24-hour fitness center, over 10



Example of completed
Rosemary Cape Cod

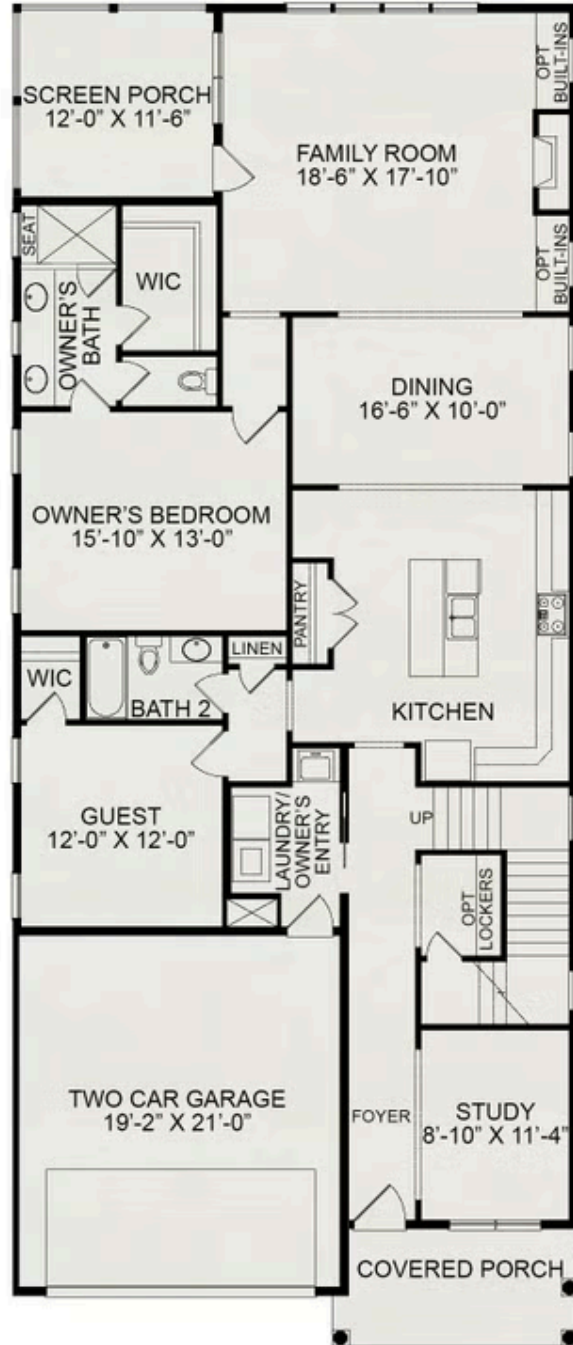


Example of completed
Rosemary Cape Cod



Example of completed
Rosemary Cape Cod

First Floor



Second Floor

