



1191 Rivershore Road

\$1,634,000

BEDROOMS: 4

BATHS: 3 full, 1 half

SQFT: 3,113

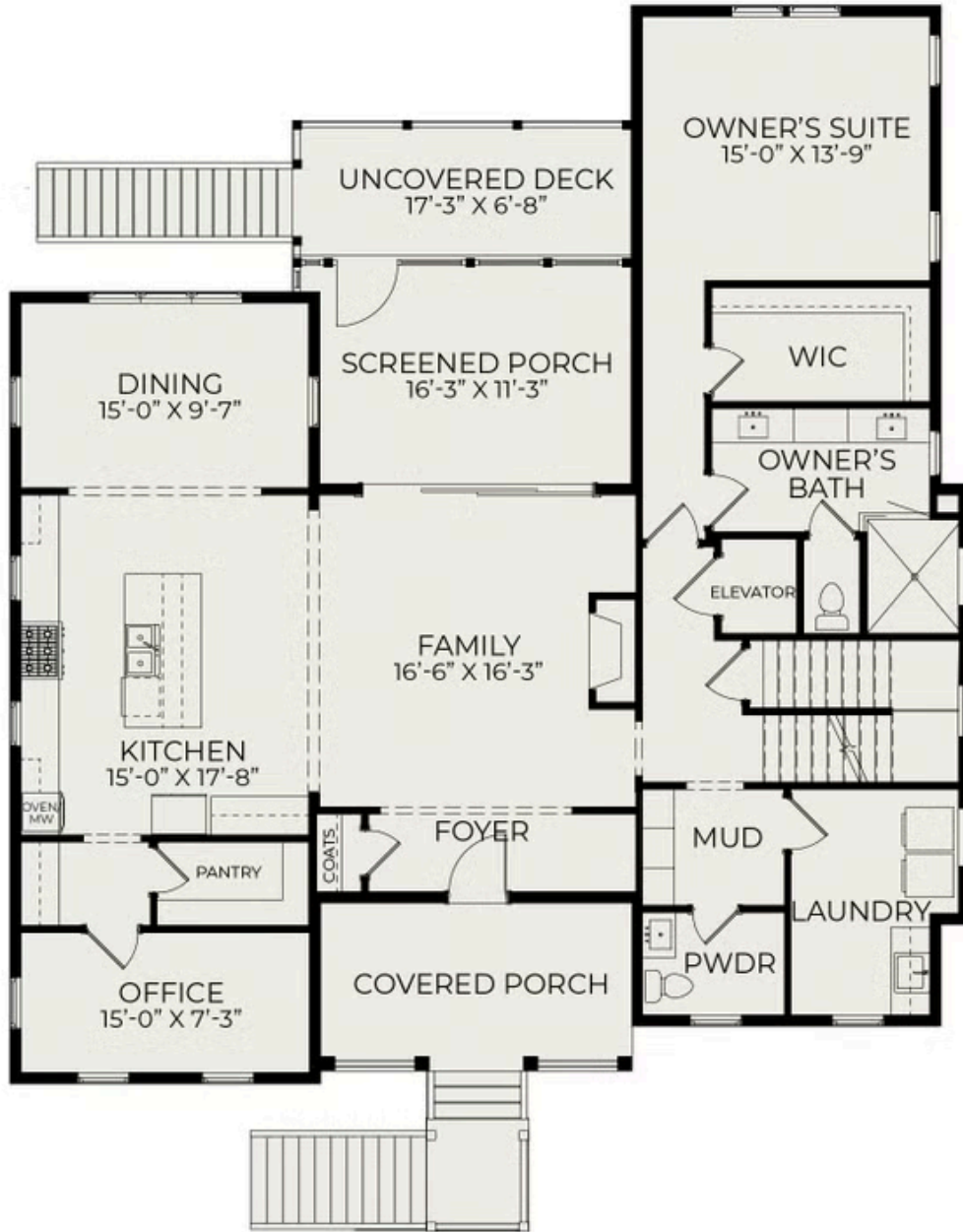
COMMUNITY: Charleston Proper

Use As You Choose with \$20,000! With the use of our preferred lender and attorney, you can apply \$20,000 toward a rate buydown, design upgrades, or closing costs helping you tailor your home and financing to fit your needs. Contact us for more details.

We're excited to present our Rivershore plan in the prestigious Beresford Creek Landing community, showcasing our signature craftsmanship on one of the neighborhood's most private homesites. Positioned at the end of a cul-de-sac and surrounded by wetlands and lagoons, this custom-designed home reflects our commitment to thoughtful architecture that harmonizes with the natural Lowcountry setting. Built with our award-winning attention to detail and featuring premium finishes throughout, this home offers the perfect blend of modern luxury and coastal charm that defines our Built for Life philosophy.



First Floor



Second Floor



Drive Under Garage

