



2209 Weepoolow Trail

\$1,385,000

BEDROOMS: 4

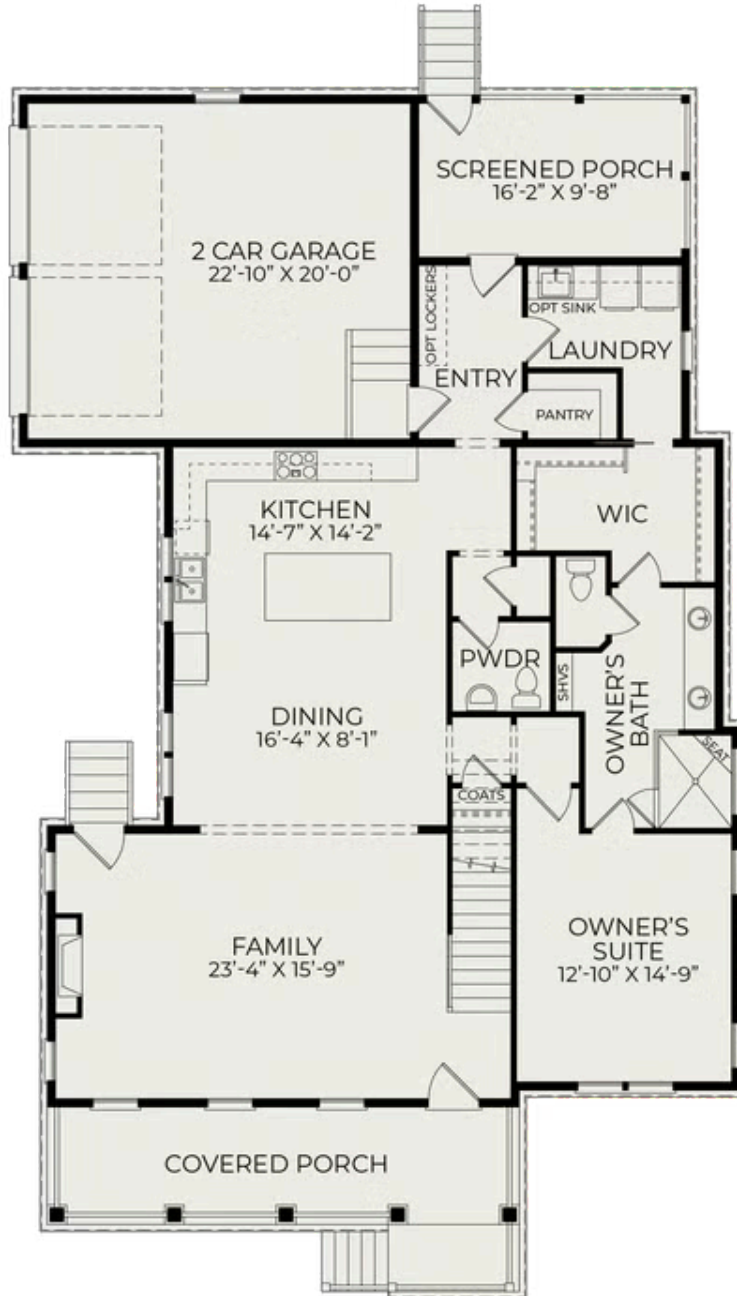
BATHS: 3 full, 1 half

SQFT: 2,942

COMMUNITY: Charleston Proper

The Sumter plan is a beautifully designed 4-bedroom, 3.5-bath home offering the rare convenience of a first-floor owner's suite in one of the area's most sought-after gated communities. The open main level flows seamlessly from the kitchen and dining area into a spacious family room, making it perfect for both entertaining and everyday living. A covered front porch and screened rear porch extend your living space outdoors, letting you fully embrace the Lowcountry lifestyle. Upstairs, three generously sized bedrooms and a large rec room provide all the space your family needs. The stacked covered porches and classic exterior make a lasting first impression from the moment you arrive. Located in Ashley Harbor with direct access to the Ashley River, this home offers a lifestyle as impressive as the home itself. Don't miss your opportunity to make this home yours!

First Floor



Second Floor

