



327 Simone Drive

\$2,495,000

BEDROOMS: 5

BATHS: 5 full

SQFT: 3,436

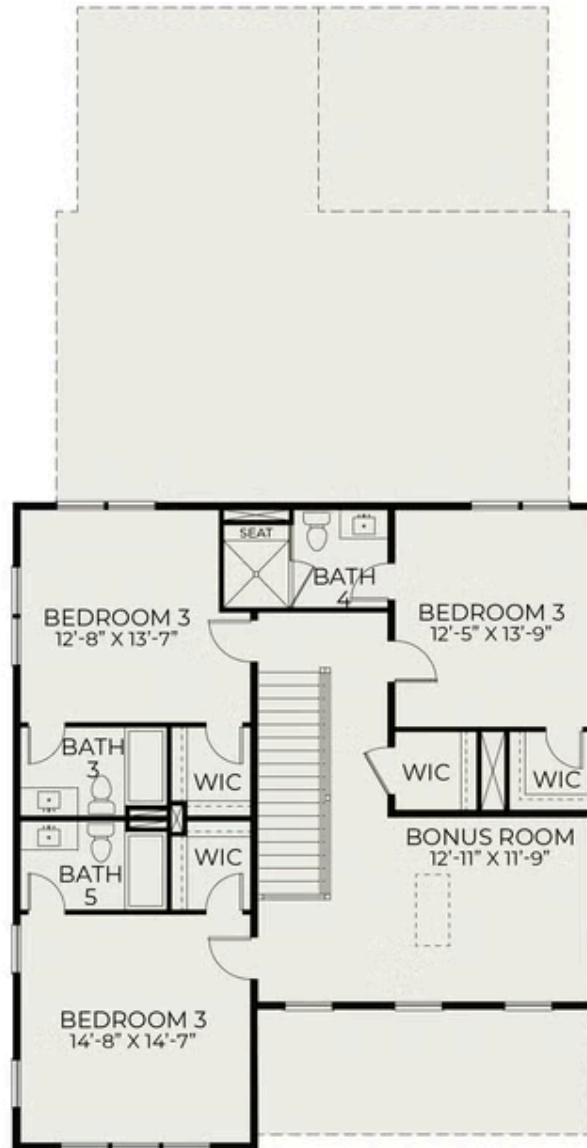
COMMUNITY: The Marshes at Daniel Island

Nestled along the marsh's edge in the coveted Marshes at Daniel Island, you'll find Lowcountry living at its absolute finest. The Rhoden plan flows effortlessly from a chef-inspired kitchen into generous living and dining spaces, spilling out onto a screened porch where marsh views and salt breezes make every evening feel like a retreat. A first-floor primary suite offers the privacy and tranquility of a true sanctuary, while four additional bedrooms with ensuite baths and a bonus room give family and guests space to spread out and settle in. Every corner of this home has been finished with intention, creating an atmosphere that feels at once elevated and deeply livable. Daniel Island's walkable village, waterfront dining, and world-class golf and tennis are all moments away, because here, the lifestyle is just as exceptional as the home itself.

First Floor



Second Floor



Drive Under Garage

