



2947 Maritime Forest Drive

\$1,865,000

BEDROOMS: 4

BATHS: 3 full, 1 half

SQFT: 2,837

COMMUNITY: Charleston Proper

Rising gracefully above the live oaks on John's Island, this classic dormered cottage welcomes you home with double front porches and a wide staircase that sets the tone before you even walk through the door. Inside, an open family room flows easily into the dining space and a chef's kitchen anchored by a substantial island, the kind of layout built for holiday mornings and everyday togetherness alike. The primary suite offers a private retreat on the main level, complete with a spa bath and generous walk-in closet, while a thoughtful mudroom and elevator make daily life effortless. Upstairs, two more bedrooms and a cozy loft leave room to grow, with plenty of storage space ready to become whatever this home's next chapter calls for. Out back, a screened porch spans the width of the home, offering shaded, breezy space perfect for slowing down and watching the Lowcountry evening settle in. This is a home built for the rhythm of island life, unhurried, open hearted, and rooted in place.



Example of Completed
Charleston Home

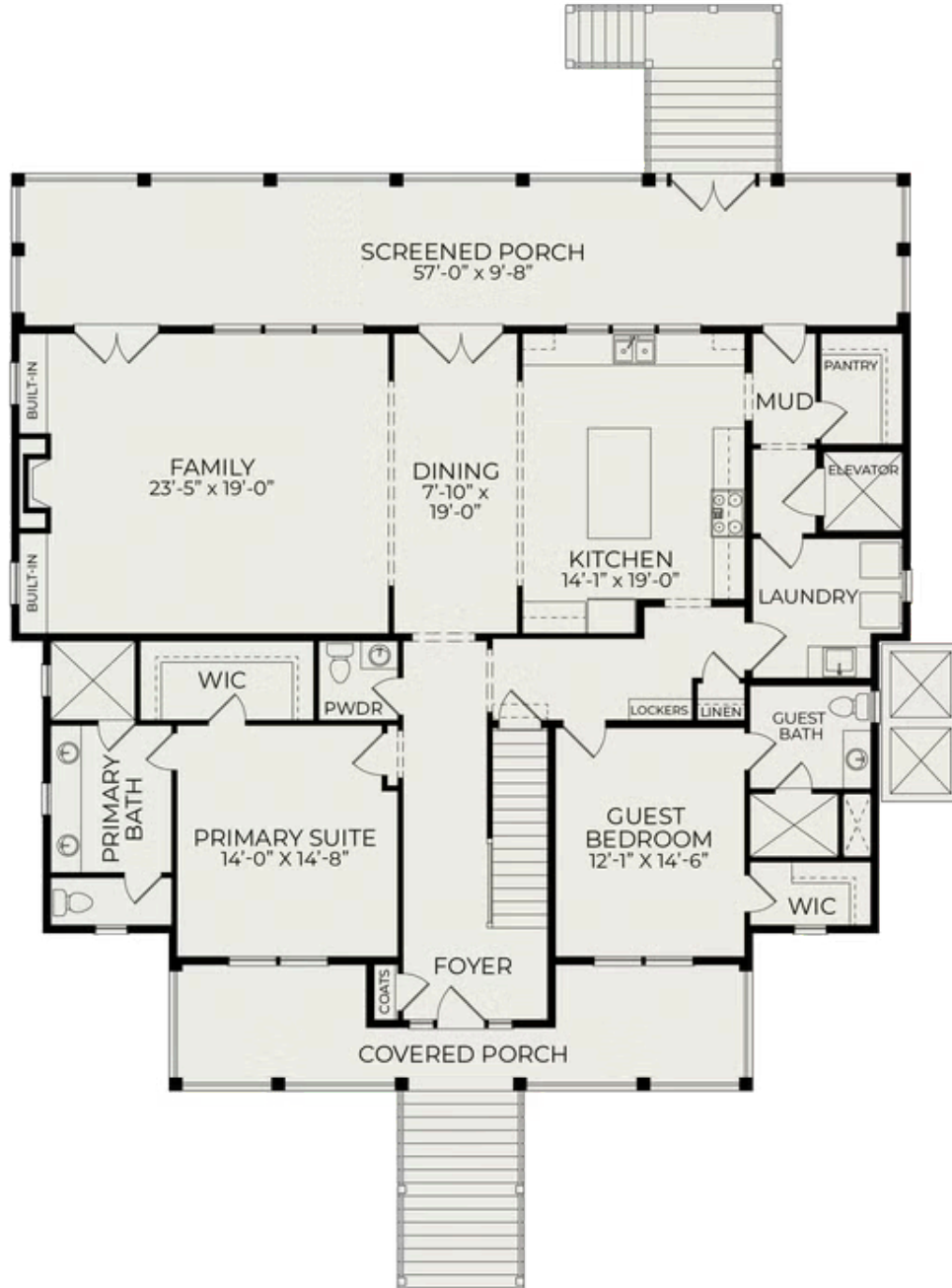


Example of Completed
Charleston Home



Example of Completed
Charleston Home

First Floor



Second Floor

