




# Aberdeen

**Starting at \$670,000**

Nexton

**2 Elevations Available**

 4 bd

 3 ba

 2,451 sqft

The Aberdeen is a primary bedroom down home that offers open concept living. Free flowing dining and living space with private owners suite and entry. The flexible living options allow this plan to be used for a first floor study or guest living with a full bathroom. Upstairs offers a large rec room with additional two bedrooms and full bathroom. The primary suite comes with the gem of an oversized walk in closet with private laundry room access for convenience. Enjoy all the wonderful weather Charleston offers on the screened in back porch. This plan also includes a 2 car garage!



Aberdeen H

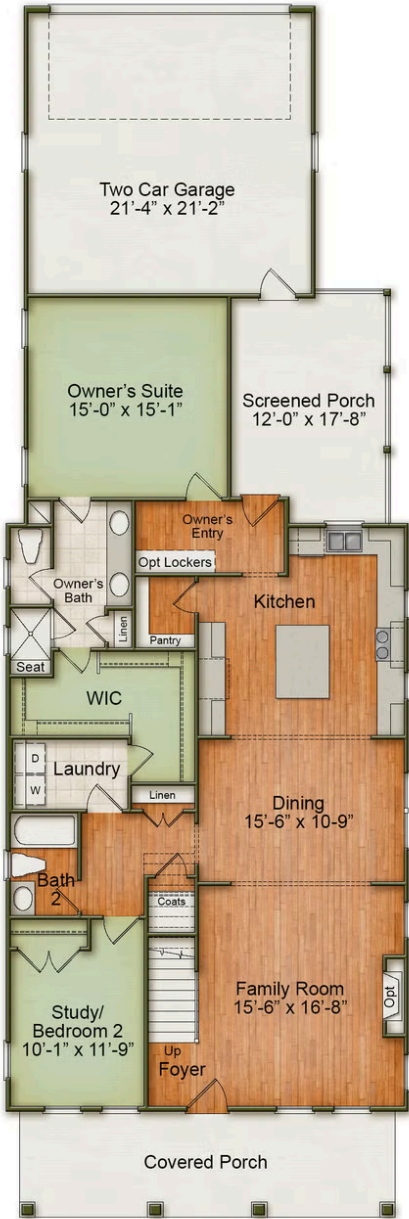


Aberdeen H2



Front Elevation

1st Floor



2nd Floor

