





## Arrow Wood

**Starting at \$832,000**

Nexton

**1 Elevations Available**

 **3 bd**

 **3.5 ba**

 **3,007 sqft**

The Arrow Wood offers the ease of one-level living with thoughtful flexibility built in. Its open-concept layout blends kitchen, dining, and living areas seamlessly perfect for everyday living or entertaining. The private primary suite is tucked away for maximum relaxation, while a front guest bedroom and full bath offer a welcoming space for visitors. The front flex space provides a quiet work-from-home zone or hobby room. The plan also offers an optional sunroom or flex space off the Kitchen that can be used for a formal dining space, play area, or entertaining lounge to relax and enjoy the backyard views.

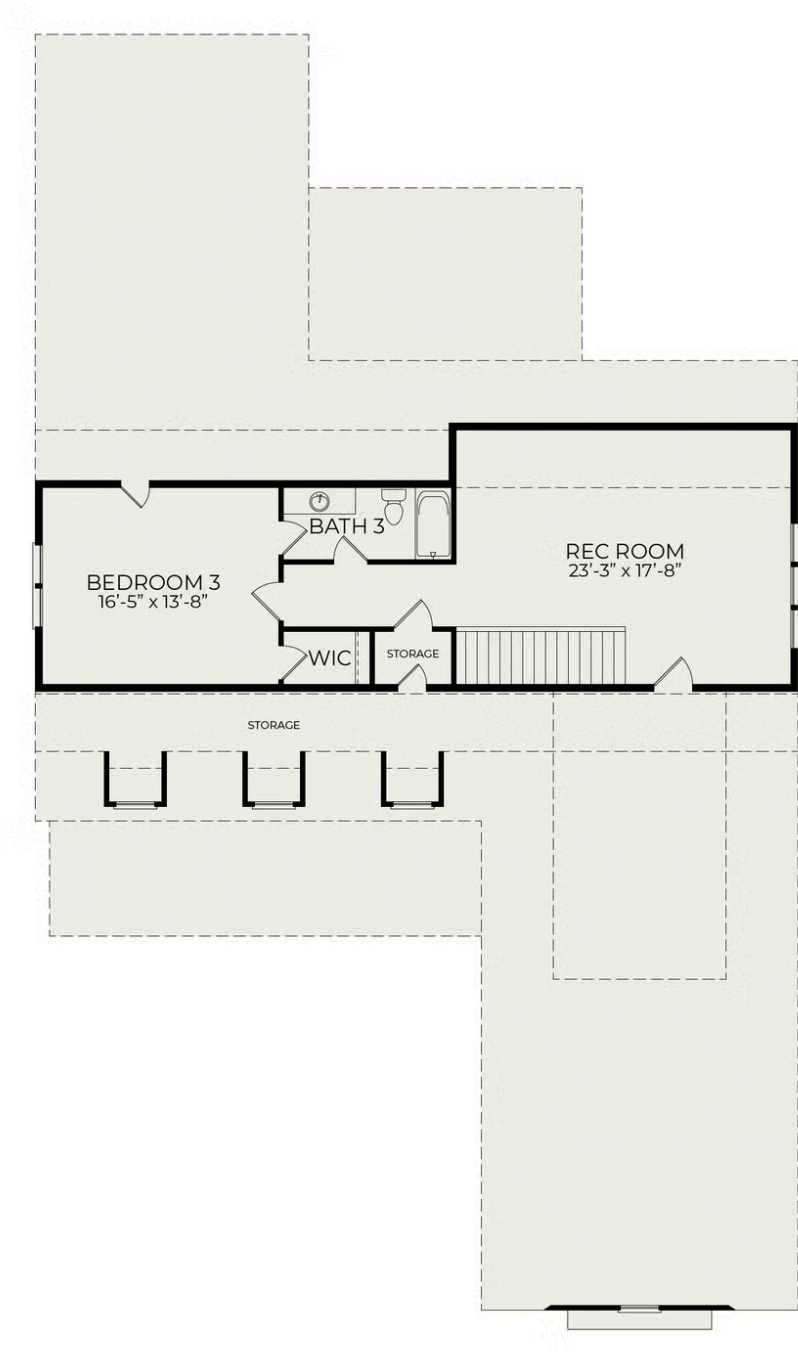


Arrow Wood

First Floor



Second Floor



First Floor (Optional Sun Room)

