




Camellia

Starting at \$660,000

Nexton

1 Elevations Available

 4 bd

 3.5 ba

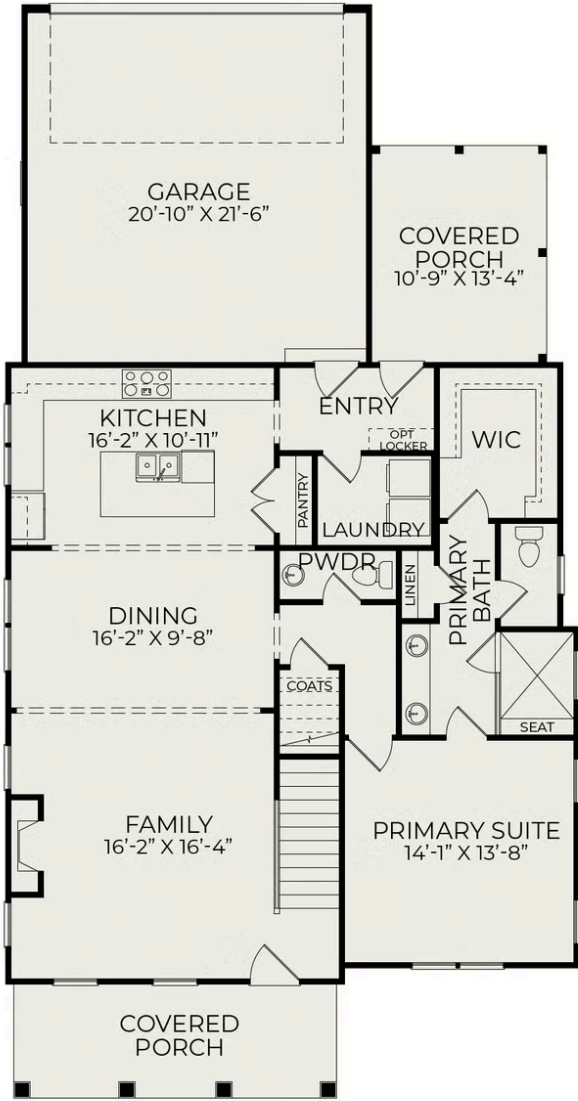
 2,579 sqft

The new Camellia plan is a stunning two-story home offers the perfect blend of luxury, comfort, and convenience. Enjoy ample space for family and guests with four well-appointed bedrooms and three and a half baths. The spacious primary suite, conveniently located on the main level, features a luxurious en-suite bathroom and a generous walk-in closet, providing a private retreat within your home. The open layout of the main level is perfect for entertaining, seamlessly connecting the kitchen, dining area, and living room. The expansive Rec room upstairs is perfect for entertaining, family activities, or creating a personalized space to suit your needs. The attached two-car garage offers convenient parking and additional storage options.



Camellia H

First Floor (attached garage)



Second Floor (attached garage)

