




# Drayton


**Starting at \$862,000**

Nexton

**1 Elevations Available**

 **5 bd**

 **4.5 ba**

 **3,565 sqft**

The Drayton plan is a custom classic Lowcountry design at its best. This five bedroom home with additional rec room and 2 car garage showcases a foyer at each front and rear entry. The downstairs primary suite is tucked away and offers an expansive bath with large walk in closet. The main level offers a guest suite, open family room with elegant built-ins and kitchen with oversized pantry, separate dining and additional keeping room. Enjoy all of the perks of living the Lowcountry life on these oversized porches.



Drayton H1

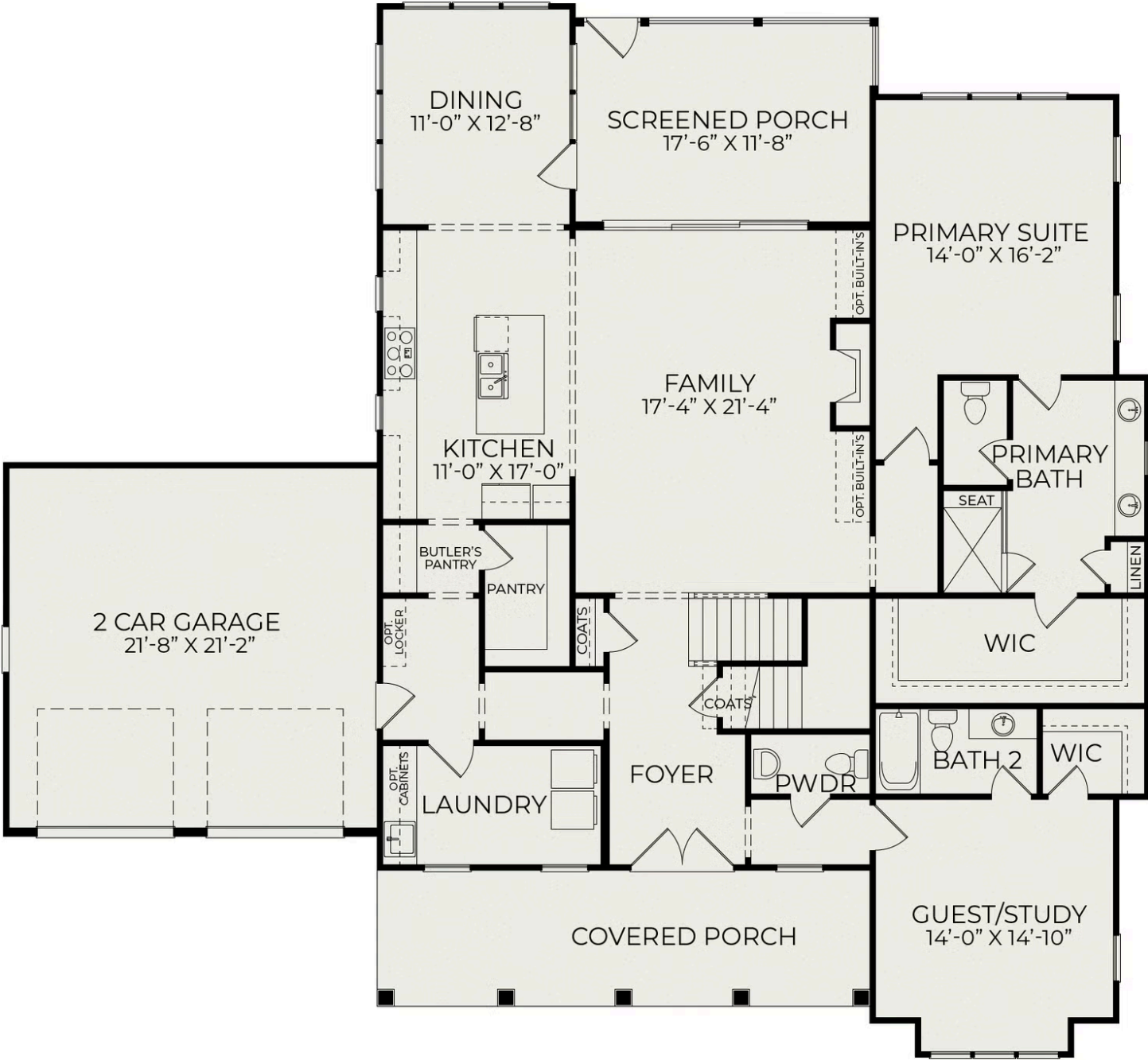


Front Elevation



Formal Dining

First Floor



Second Floor

