





Drayton


Starting at \$862,000

Nexton

1 Elevations Available

 5 bd

 4.5 ba

 3,461 sqft

The Drayton is a five bedroom, two-story home designed around the way families actually live. With the primary suite on the main floor and four additional bedrooms upstairs, it offers privacy for the people who want it and togetherness for the moments that call for it. The foyer opens to a spacious family room that flows into a kitchen built for real cooking and real gathering, anchored by a generous island, walk-in pantry, and butler's pantry. Just off the dining room, a screened porch invites those long evenings when dinner stretches a little longer than planned.

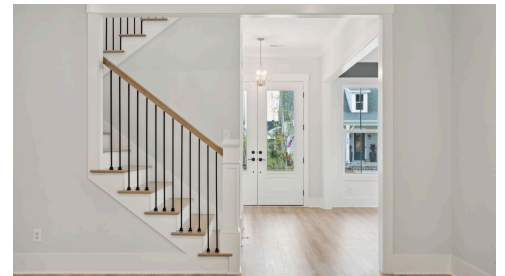
The main-floor primary suite is a true retreat, complete with a spa-style bath, soaking tub, and a



Drayton H1

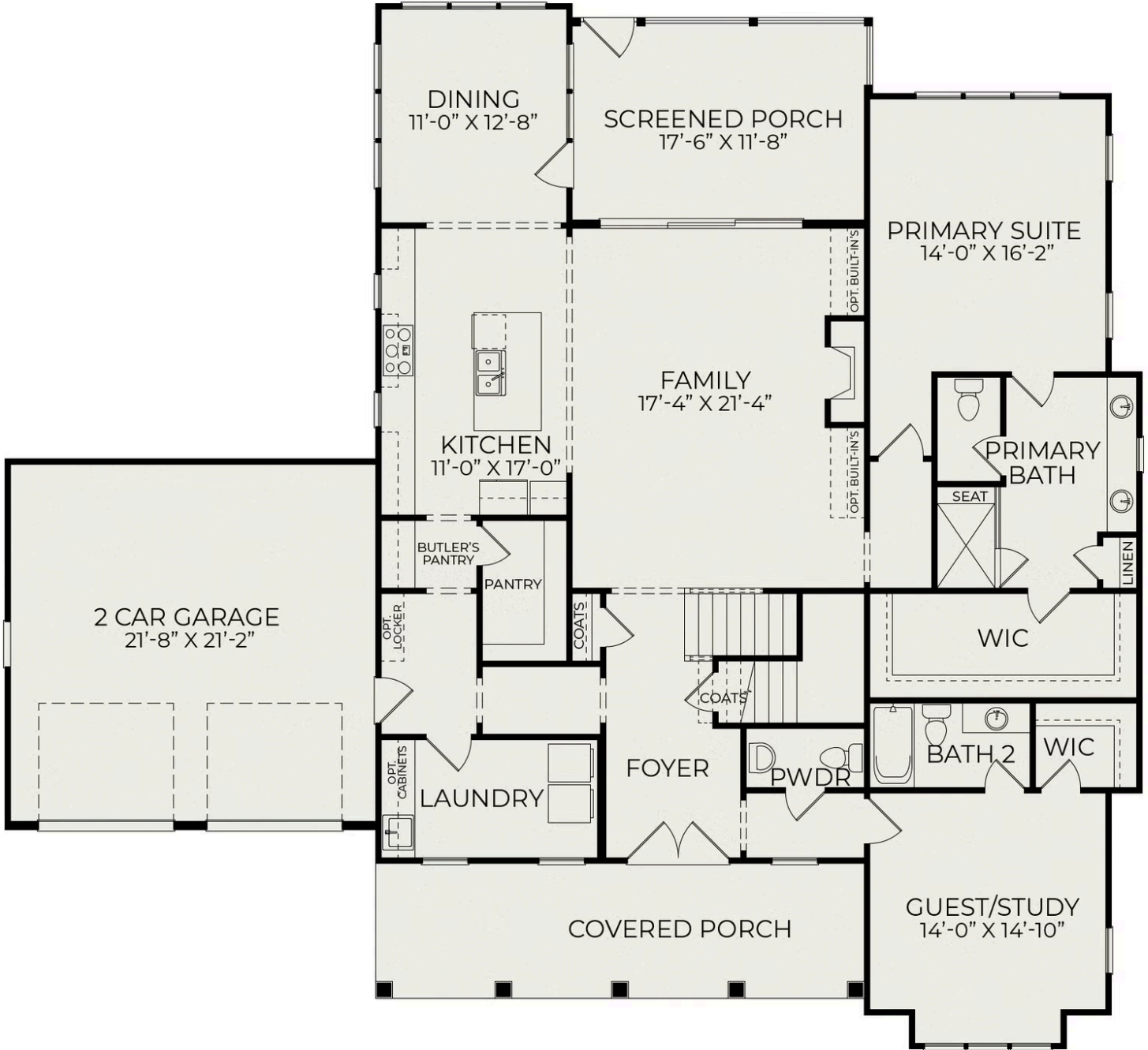


Example of completed Drayton plan



Example of completed Drayton plan

First Floor



Second Floor

