



516 Evenfall Lane

\$699,500

1 Elevations Available

BEDROOMS: 4

BATHS: 3 full

SQFT: 2,600

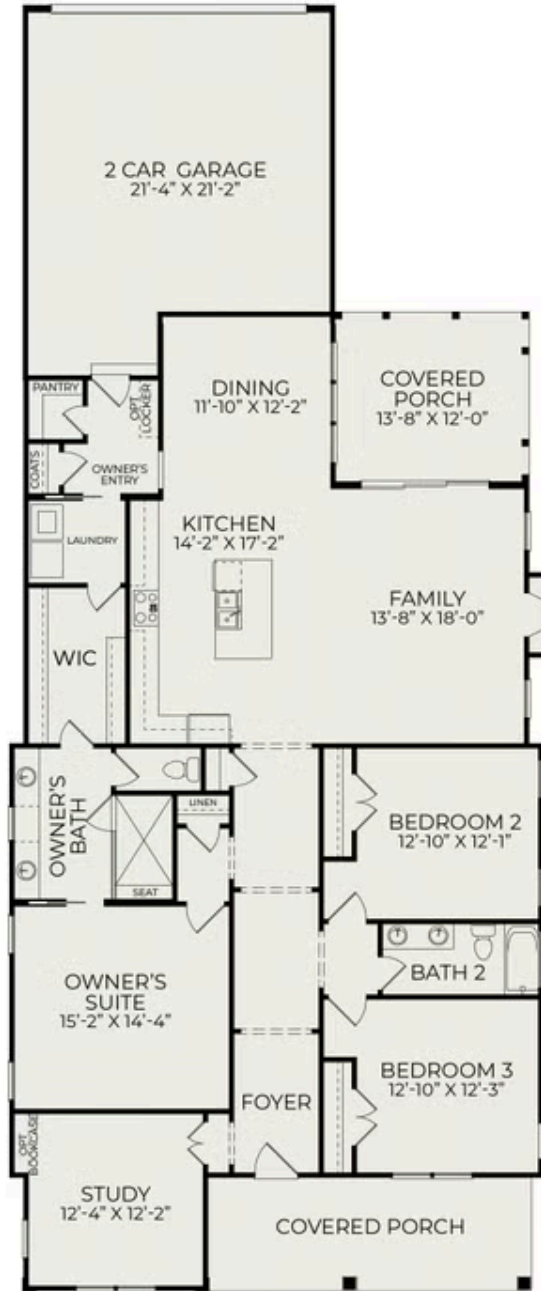
COMMUNITY: Nexton

FLOOR PLAN: Hutchinson (Two-Story)

Meet the Hutchinson, a charming and incredibly versatile two-story floor plan designed for the way families truly live in the heart of Nexton. This beautifully designed home offers 4 bedrooms, 3 bathrooms, and a layout that checks every single box. The main level is an absolute dream, featuring a spacious family room, a well-appointed kitchen with pantry, a generous dining area, a private study with optional bookcase, a main floor laundry, and a covered porch perfect for soaking up those beautiful Lowcountry evenings. The main floor owner's suite is a true retreat, complete with a spa inspired bath, walk in closet, and a serene and private feel that makes coming home feel like a vacation. Two additional bedrooms and a full bath round out the first floor, giving your family all the main level living they could ever need. Upstairs, a fourth bedroom, a full bath, and a loft create the perfect private getaway for guests, older kids, or a dedicated hobby space. With its adorable cottage inspired exterior featuring a covered front porch, and a 2-car garage, the Hutchinson is a home that is as delightful on the outside as it is on the inside.



First Floor



Second Floor

