




Mansfield


Starting at \$671,000

Nexton

3 Elevations Available

 4 bd

 3.5 ba

 2,595 sqft

The Mansfield plan is a four bedroom, primary bedroom down plan that features open concept living. The theme of this home is flexible. It offers flexible dining space with oversized kitchen island , breakfast area and an additional space that can be used for formal dining or a private study. Need a quiet place for those virtual meetings? Take those from the hidden pocket office on the main level. The second floor features three bedrooms and buddy bath in addition to the flexible space that can be used for office space or health and fitness. Top this all off with an attached two car garage and screened in porch that makes this plan feel like home.



Mansfield H2

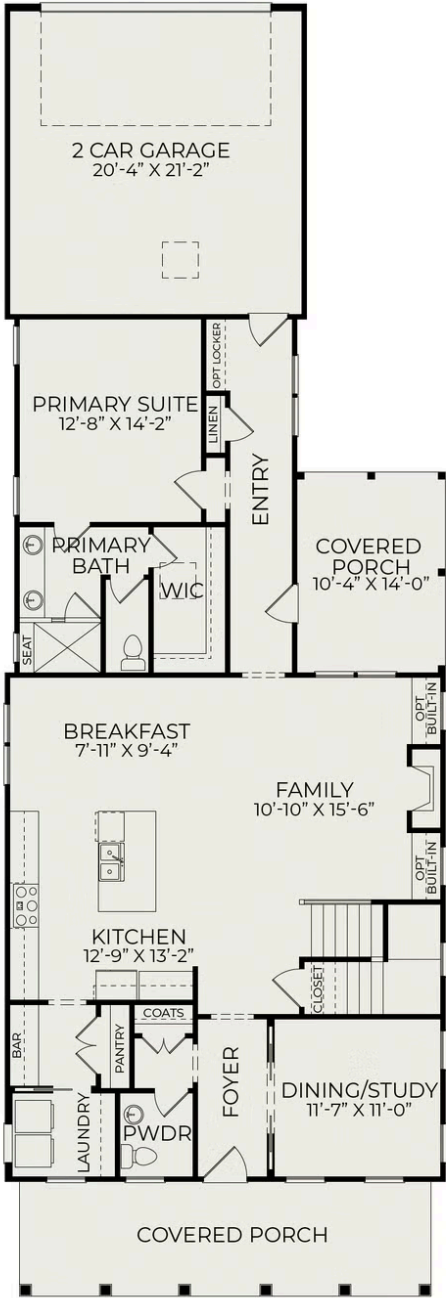


Mansfield H3



Front Elevation

First Floor



Second Floor

