




Middleton

Starting at \$817,000

Nexton

1 Elevations Available

 **4 bd**

 **3.5 ba**

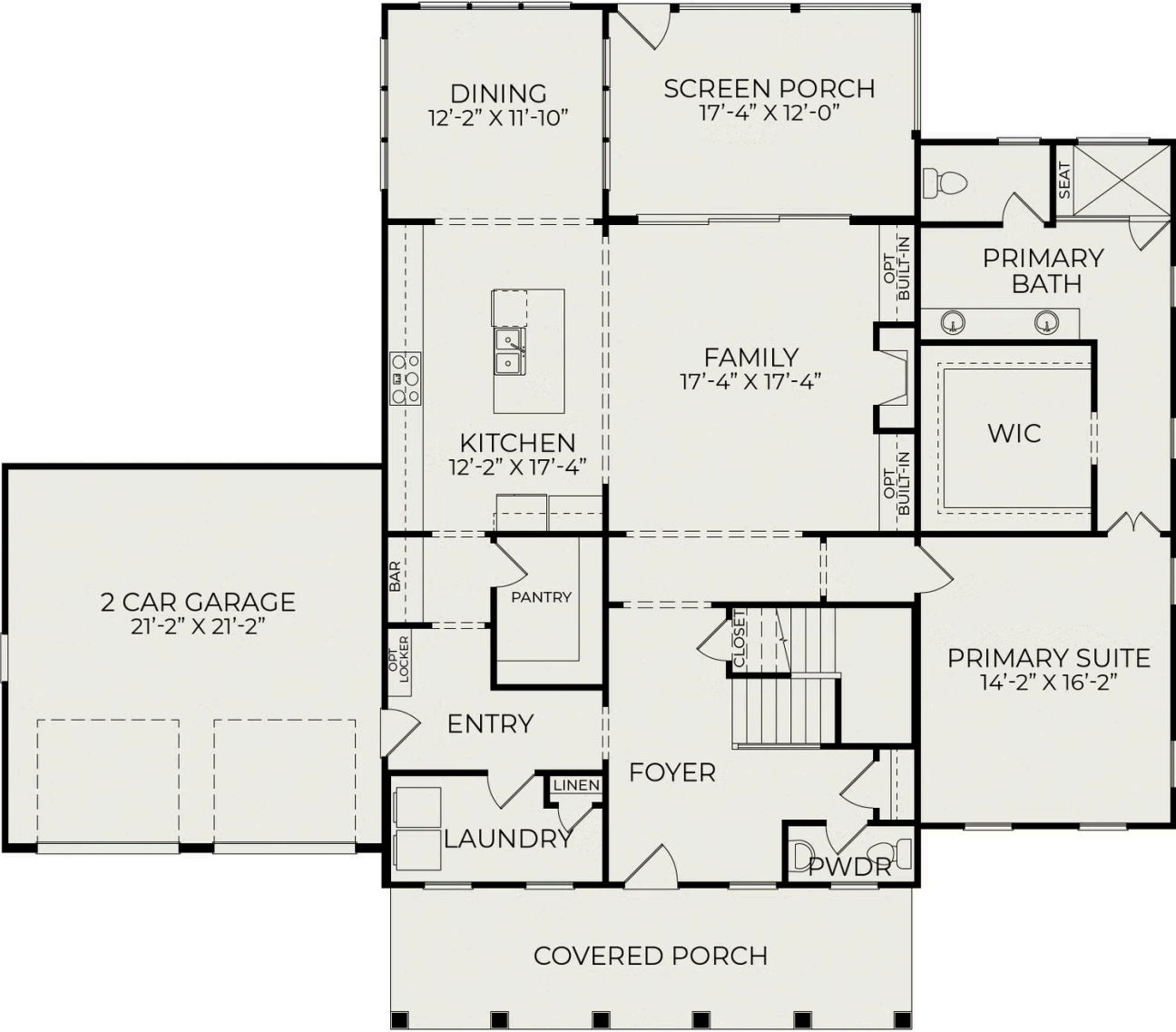
 **3,000 sqft**

Lowcountry charm meets functional design in this Middleton plan . This home offers four bedrooms with first floor owners suite. The owners bath has a large seated shower and expansive walk in closet. Open concept living throughout main level with additional storage in the butlers area and oversized pantry. Secondary bedrooms are connected by Jack and Jill bath upstairs. The second floor offers additional space for a work or health and fitness. The storage is abundant in this home with expansive unfinished storage space. The detached two car garage has owners entry in the back of home with additional cubby storage. Enjoy the indoor/outdoor feel with oversized glass sliders from the family room onto the screened porch.



Middleton H1

First Floor



Second Floor

