





Pine Mill


Starting at \$603,000

Nexton

1 Elevations Available

 **3 bd**

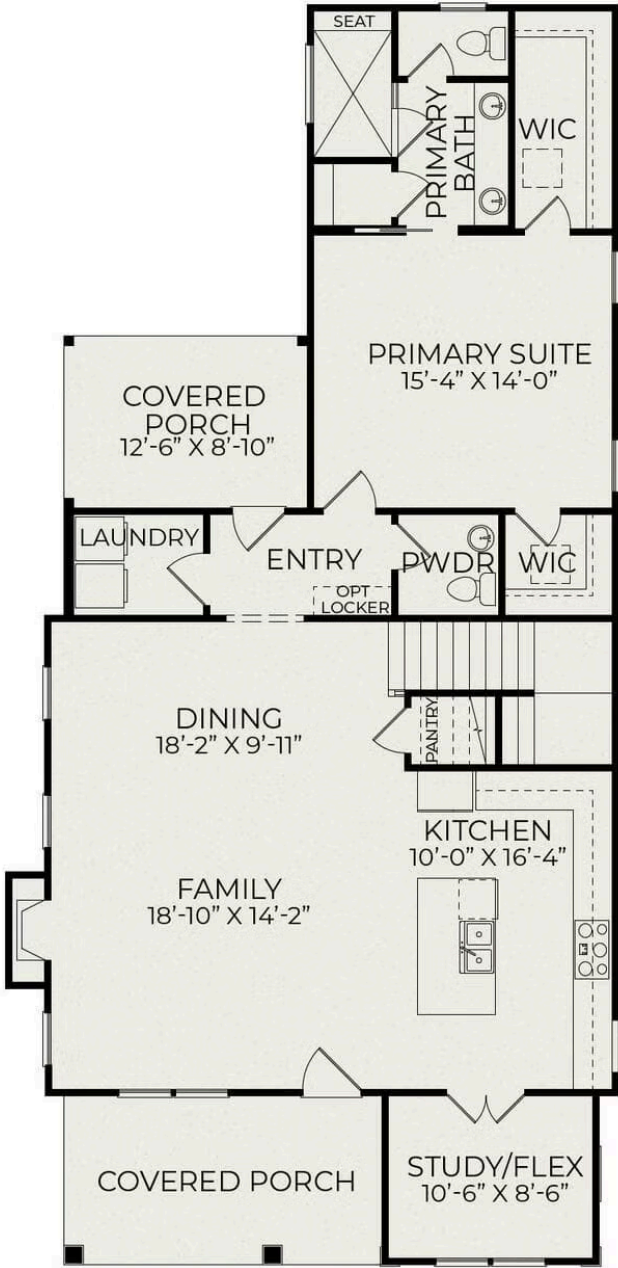
 **2.5 ba**

 **2,047 sqft**

The Pine Mill plan offers Southern charm and modern comfort. Boasting three bedrooms and two and a half baths, with the Primary suite on the main level, this home seamlessly blends traditional architecture with contemporary conveniences. Upon entering, you're greeted by an inviting open-concept living area and spacious kitchen. A flex space adjacent to the kitchen offers versatility, ideal for a cozy breakfast nook, home office, or a quiet reading corner. The second floor includes two additional



First Floor



Second Floor

