



506 Ivy Green Lane

\$679,250

BEDROOMS: 4

BATHS: 3 full, 1 half

SQFT: 2,595

COMMUNITY: Nexton

Lock in a 30-Year Fixed Rate at 1% Below Today's Average

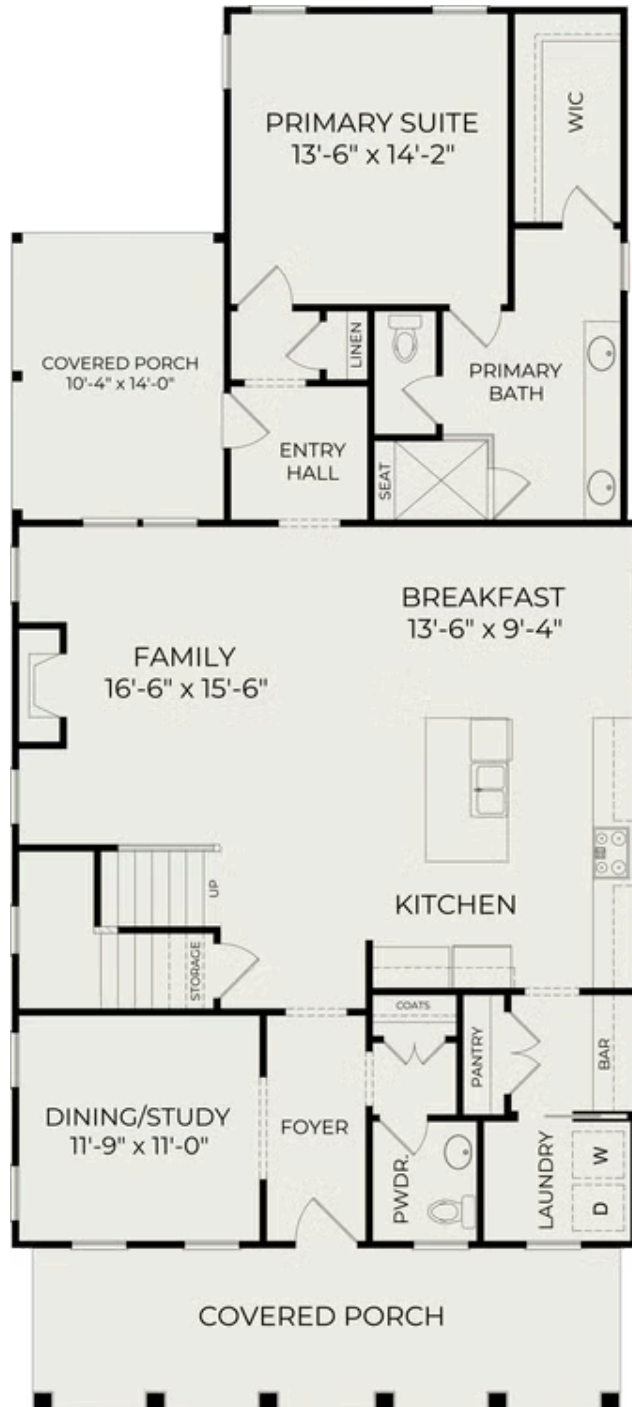
With the use of our preferred lender and attorney, you can secure financing at a rate one percent lower than the daily average. No hassle. No gimmicks. Just a straightforward opportunity designed to give you peace of mind, confidence, and long-term security as you take the next step toward your new home.

The Mansfield offers a perfect balance of space and functionality. The open-concept main floor features a spacious kitchen, breakfast area, and family room that flow to a covered rear porch, along with a private primary suite and flexible dining or study space. Upstairs, additional bedrooms and a large flex space provide room for work, play, or relaxing. With inviting porches and thoughtfully designed living areas, the Mansfield is ideal for modern Lowcountry living.



Exterior Rendering

First Floor



Second Floor

